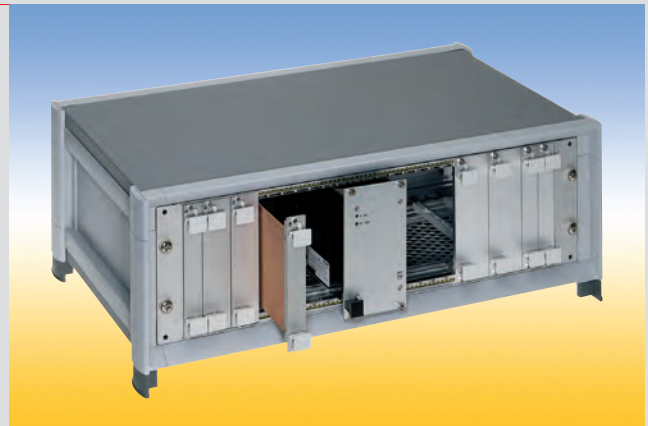


Housings

Desktop Housings

***InterMeZo* Housing**

- ✓ Design front
- ✓ Functional front
- ✓ Variable in three dimensions
- ✓ Can be RFI-shielded
- ✓ Mechanical protection up to IP 54



***InterCase* Desktop Housing**

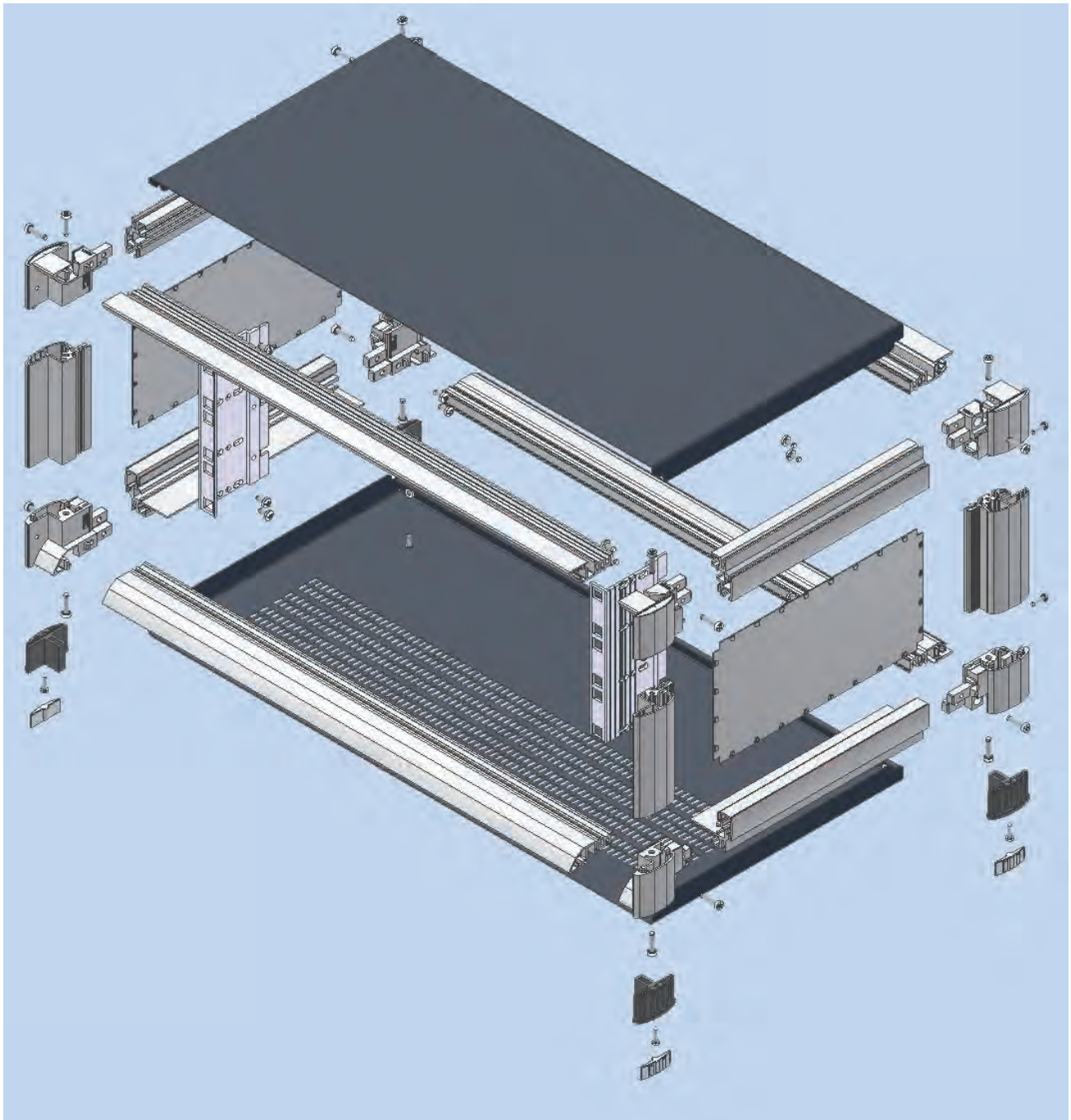
- ✓ Easy construction
- ✓ Service friendly
- ✓ Variable dimensions
- ✓ Can be RFI-shielded



***InterLock* Housing**

- ✓ Covering of subracks
- ✓ Easy mounting without screws





Requirements

A modern housing flexible in its applications, with a modular design, can be RFI-shielded and ventilated, in an attractive design and at a reasonable price: InterMeZo

Construction

1. Housing frame

The InterMeZo housing is based on a framework construction consisting of profiles and corner connectors. This flexible design also enables fast and cost-effective assembly of individual housing sizes.

2. Easy to access

For quick access to the installed electronics the cover plates are pressed into profiled grooves and secured with two screws.

3. RFI shielding

The side walls are pressed into profile grooves; contact elements ensure RFI-shielded bonding. To achieve effective protection of the housing against dust and water the cover panels, the rear wall and the door can all be fitted with seals.

4. Mechanical sealing

To achieve effective protection of the housing against dust and water the cover panels, the rear wall and the door can all be fitted with seals.

5. Recessed grips

Grips for easy transportation are formed by the recessed mounting of the side walls.

6. Equipment supports

Subracks can be installed variably as the housing depth permits.

7. Chassis panels

The depth profiles are provided with grooves in which chassis panels or similar can be fitted at any depth with the aid of spring nuts.

Summary

The InterMeZo housing from InterMas is a modular and cost-effective housing solution for high-quality industrial electronics in a visually attractive design, developed for the highest possible flexibility and simplest possible assembly, with expansion capabilities for more demanding needs, compliant with stringent EMI/ESD protection specifications, and with extensive configuration options to fulfil application-specific requirements.

Technical data

Materials	casing: aluminum profiles corner connectors: die-cast zinc feet: ABS other parts: 0.8 mm galvanized sheet steel
Finish	standard for rear wall and cover panels: painted dark gray (RAL DS 5500) standard for casing and side walls: painted light gray (RAL DS 7000) feet: dark gray

Versions

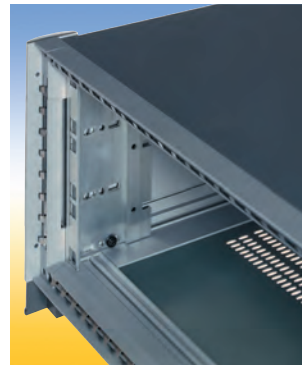
The *InterMeZo housings* are available to assembly 19"- or metric subracks. Alternatively, any dimensions for variable applications are possible.

For all versions the possibility exists to choose between the following types.



1. Design front

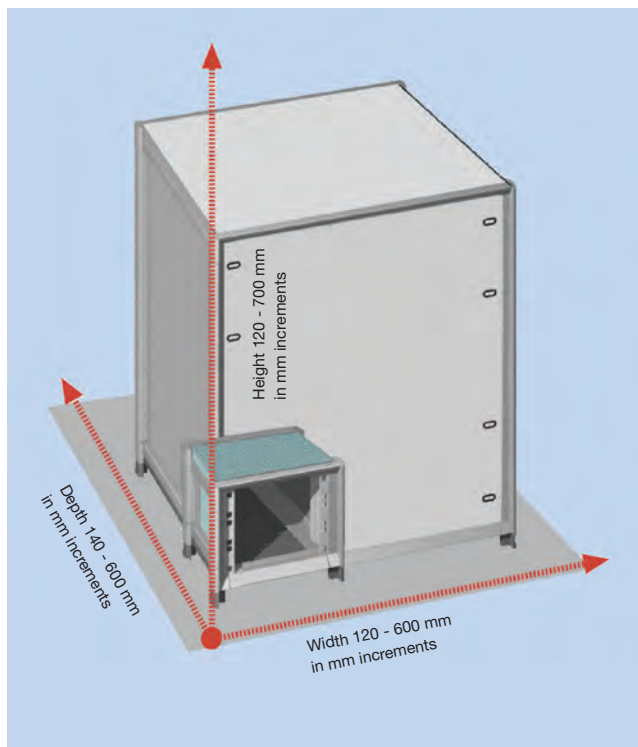
This version has been constructed in terms of a harmonic front design for use with a wide range of applications.



2. Functional front

For higher protection against dust and water as well as EMC shielding.

InterMeZo Housing

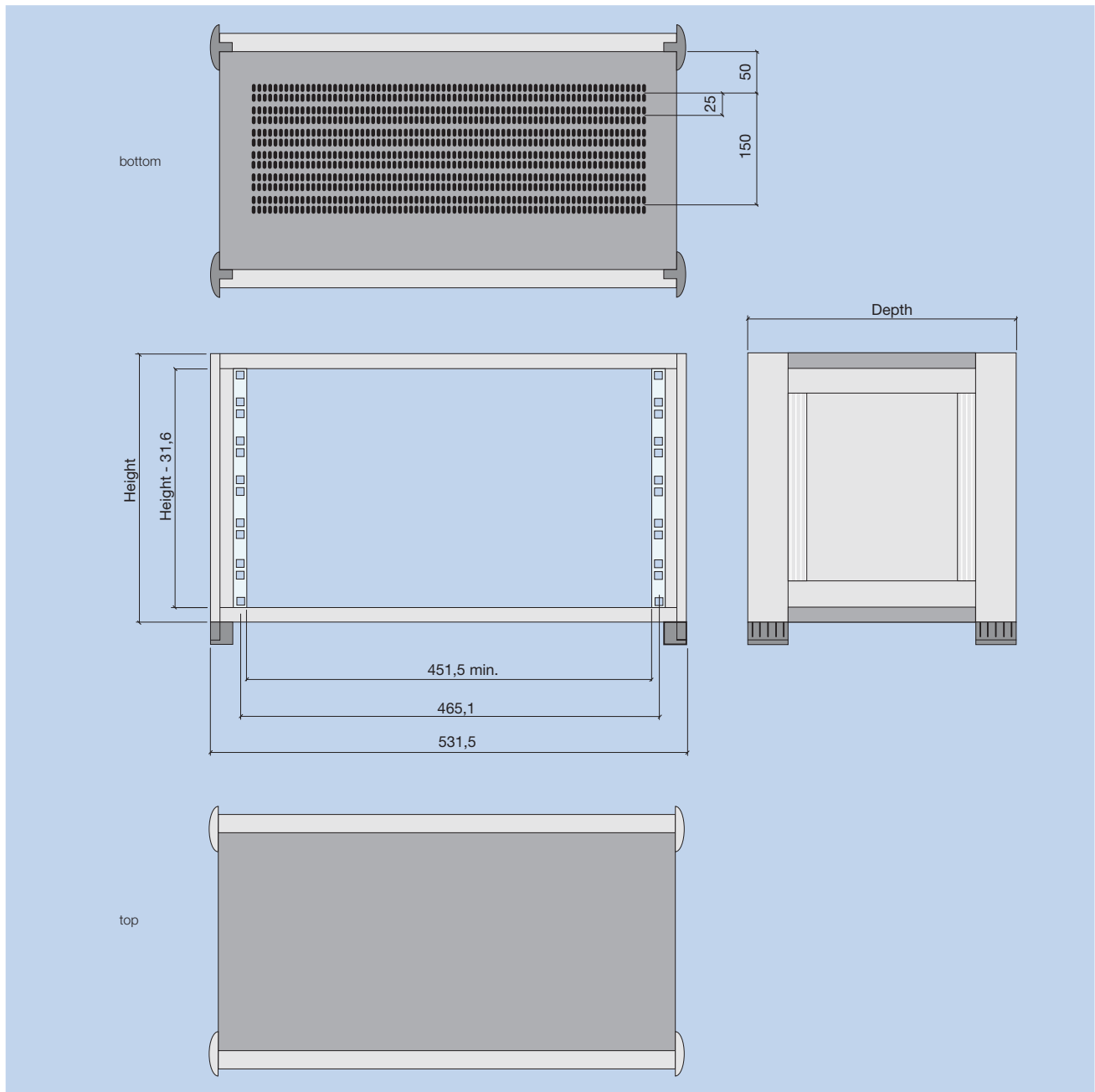


InterMeZo Housing

Housing	pieces _____
Dimension	height: <input type="checkbox"/> 3 U <input type="checkbox"/> 6 U width: <input type="checkbox"/> 84 HP <input type="checkbox"/> 42 HP depth: <input type="checkbox"/> 300 mm <input type="checkbox"/> 400 mm <input type="checkbox"/> 500 mm <input type="checkbox"/> other: height: _____ U or _____ mm width: _____ HP or _____ mm depth: _____ mm
Design	<input type="checkbox"/> design front <input type="checkbox"/> front <input type="checkbox"/> rear <input type="checkbox"/> functional front <input type="checkbox"/> front <input type="checkbox"/> rear
Color casing, side wall	<input type="checkbox"/> RAL DS 7000 <input type="checkbox"/> RAL _____
Color rear wall, panels	<input type="checkbox"/> RAL DS 5500 <input type="checkbox"/> RAL _____
Louvers in	<input type="checkbox"/> bottom panel <input type="checkbox"/> top panel <input type="checkbox"/> rear panel

Front	<input type="checkbox"/> Casing door <input type="checkbox"/> Plexiglass door <input type="checkbox"/> Front panel	<input type="checkbox"/> anodized <input type="checkbox"/> RAL _____
19" unit support	<input type="checkbox"/> front <input type="checkbox"/> rear	
Protection class	<input type="checkbox"/> IP _____	
RFI-shielding	<input type="checkbox"/>	
Accessories	<input type="checkbox"/> Rear panel <input type="checkbox"/> Wheels <input type="checkbox"/> Carry handles <input type="checkbox"/> Side bars <input type="checkbox"/> Subplate <input type="checkbox"/> Mounting material for subrack and front panels kit _____ pieces	
Notes	_____ _____ _____	

Please ask your local representative for your
individual system configuration
 You find your contact person on our homepage:
www.intermas-el.com



Ordering details for assembled *InterMeZo* housings

nom. height [U]	height [mm]	width [mm]	depth [mm]	design- front order no. 409.	functional- front order no. 409.
3	165.60	531.50	300	166 208	-
3	165.60	531.50	400	166 209	166 217
4	210.05	531.50	400	166 210	-
6	298.95	531.50	400	166 211	166 218
6	298.95	531.50	500	166 212	-
7	343.40	531.50	400	166 213	-
9	432.30	531.50	400	166 214	166 219
9	432.30	531.50	500	166 215	-
12	565.65	531.50	500	166 216	166 220

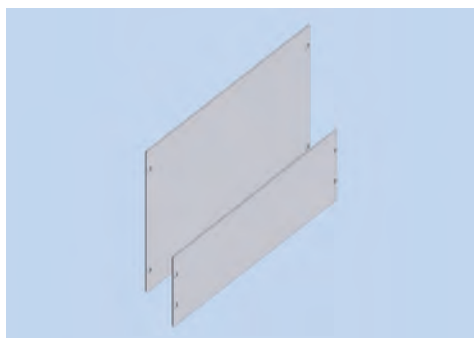
Delivery:

Housing frame with side panels, top closed, bottom panel with louvers 4 feet, 2 unit supports

Delivery:

The housing is delivered assembled and painted.

InterMeZo Housing Accessories

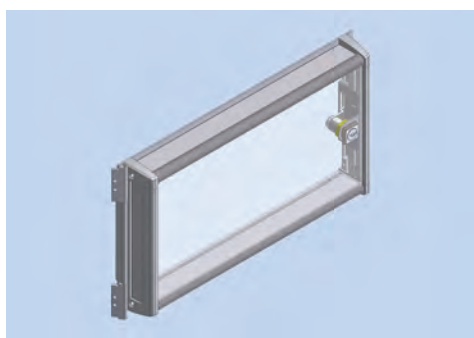


19" Front Panels

Material: aluminum 3 mm thick
Finish: anodized

Ordering details for 19" front panels

nom. height [U]	order no. 409.
3	086 513
4	086 514
6	086 516
7	086 517
9	086 519
12	086 522



19" Casing Door

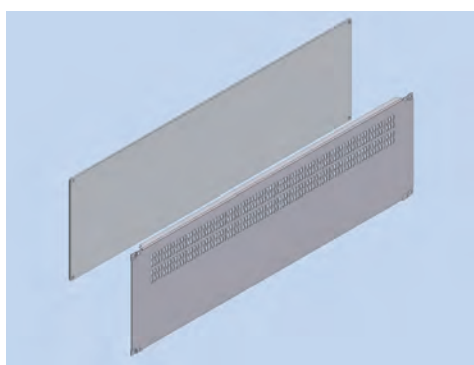
Kit consists of:
1 casing door with plexiglass pane
1 lock
2 hinges
Installation hardware

Ordering details for 19" casing door

nom. height [U]	order no. 409.
3	110 452
4	110 453
6	110 454
7	110 455
9	110 456
12	110 457

Delivery:

As complete assembled casing door.



Rear Panel, closed

Material: aluminum 2.5 mm thick
Finish: front side anodized, rear side conductive

Rear Panel with Louvers

Material: steel 0.8 mm thick
Finish: front side RAL DS 5500, rear side conductive

Ordering details rear panel

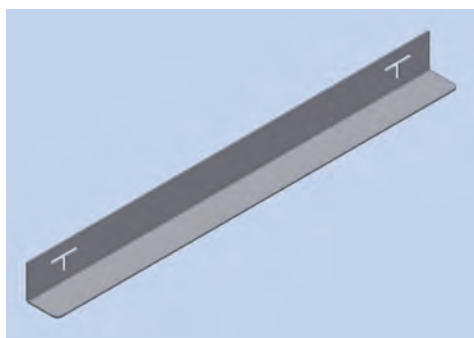
nom. height [U]	closed order no. 409.	with louvers order no. 409.
3	109 984	111 556
4	109 985	111 557
6	109 986	111 559
7	109 987	111 560
9	109 988	111 561
12	110 392	111 562

Accessories

Taptite screw M4x10

Minimum order quantity 100 pieces

order-no.: 409. 110 395



Slide Bars

Kit consists of:
2 slide bars
Installation hardware

Material: 1.5 mm galvanized sheet steel

Finish: passivated

Ordering details kit

	for housing-depth [mm]	order no. 409.
slide bar	300	111 285
slide bar	400	111 286
slide bar	500	111 287



RFI-Shielding

Material: stainless steel

Ordering details RFI-shielding-kit for rear/front panel

nom. height [U]	order no. 409.
3	110 360
6	110 361
9	110 366
12	110 367

Ordering details RFI-shielding-kit for cover plates

depth [mm]	order no. 409.
300	110 368
400	110 370
500	110 372



Unit Support

Kit consists of:
2 unit supports and
Installation hardware

Ordering details for unit support kit

nom. height [U]	order no. 409.
3	110 375
4	110 376
6	110 378
7	110 379
9	110 381
12	110 382



Mounting material for subracks and front panels in housing

Screw Locking M6

Color: black

Material: POM

Minimum order quantity 10 pieces

order no.: **409. 074 387**

Oval Head Screw

M6 x 16 DIN 7985

steel, nickel plated

Minimum order quantity 10 pieces

order no.: **409. 013 919**

Cage Nut

steel, galvanized

Minimum order quantity 10 pieces

order no.: **409. 131 652**



Castors

Kit consists of:
2 mounting angles
4 castors
Installation hardware

Ordering details for castor kit

	housing- depth [mm]	order no. 409.
castors 300	300	112 092
castors 400	400	112 093
castors 500	500	112 094

Castors are not retrofit
Please order with housing.



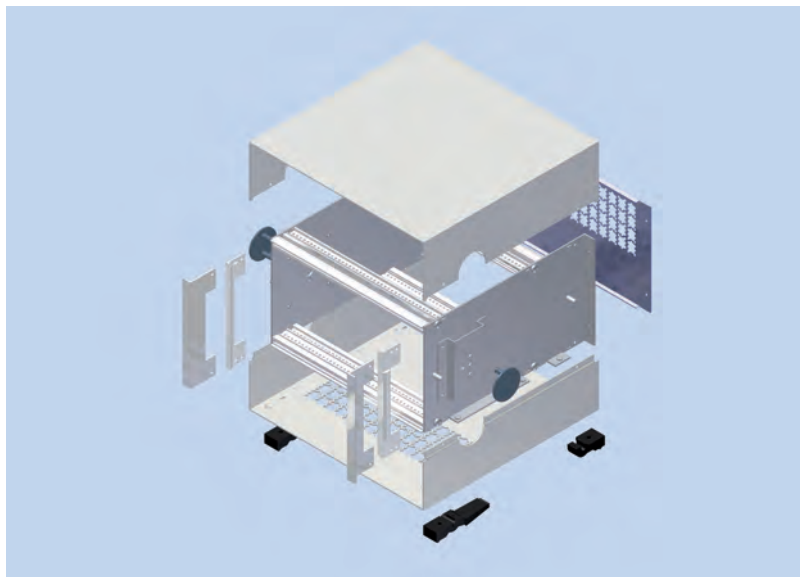
Carry Handles

Kit consists of:
2 handles
Installation hardware

Color: RAL DS 7000

order no.: **409. 112 507**

InterCase Desktop Housing



Description

The special design features of the *InterCase* desktop housing:

- ✓ A desktop housing with a simple design for standardized plug-in units and individual assemblies.
- ✓ The easy to access design allows all covering parts to be removed at any time.
- ✓ The bottom cover and the rear panel are provided with louvers.
- ✓ The side plates include perforations for attaching profile rails at different board depths.
- ✓ The comprehensive range of Intermas subrack accessories allows individual
- ✓ Can be RFI-shielded.

Technical Data

Material	Aluminum feet: plastic
Finish	side plates: blank side panels and rear panel: painted feet: black

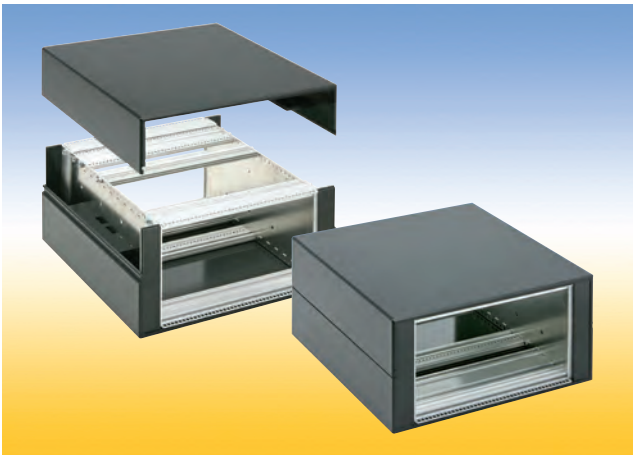
Delivery:

2 top/bottom panels
2 side plates
2 side panels
4 pr. front/rear
1 pr. front middle
(only for 6 U)
1 rear panel
2 covers
2 mounting angles
4 threaded strips
(6 for 6 U)
1 foot kit
(1 carrying handle)
Installation hardware

Ordering details *InterCase* desktop housing

nom. height [U]	width [HP]	nom. depth [mm]	total depth [mm]	order no. 409.	with carry- ing handle- order no. 409.
3	42	160	260	172 610	172 548
3	42	220	320	172 620	172 621
3	84	160	260	172 630	172 631
3	84	220	320	172 640	172 641
6	84	160	260	172 650	172 651
6	84	220	320	172 660	172 661

InterLock Desktop Housing



Material: Polystyrene 6 mm thick
Color: black

Delivery:

The *InterLock* desktop housing is delivered in single parts.

Set consists of:

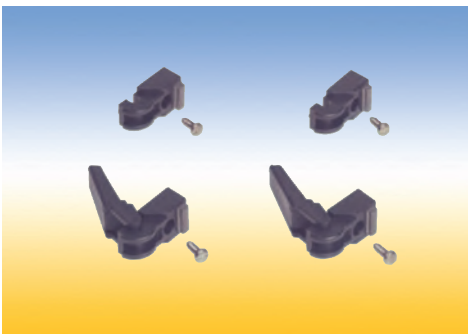
- 1 top-shell
- 1 bottom-shell

Ordering details kit - *InterLock* desktop housing

nom. height [U]	width [HP]	nom. depth [mm]	order no. 409.
3	42	220	168 935
3	84	220	168 936
6	84	220	168 937

Ordering details for compatible subrack kits

	nom. height [HE]	width [HP]	PCB depth/ nom. depth [mm]	order no. 409.
Subrack <i>FLEXIBLE Fi-alpha</i> prepared for RFI	3	42	160/220	133 306
Subrack <i>FLEXIBLE Fi-alpha</i> prepared for RFI	3	84	160/220	133 307
Subrack <i>FLEXIBLE Fi-alpha</i> prepared for RFI	6	84	160/220	133 308



Accessories *InterLock*

Foot kit:

- 2 feet without tip-up
- 2 feet with tip-up
- 4 lens head screws with nut

Material: Ultramid

Color: black

Foot kit

order-no.: **409. 133 305**

Accessories other housings

Foot kit:

- 2 feet without tip-up
- 2 feet with tip-up
- 4 self-tapping screws

Material: Ultramid

Color: black

Foot kit

order-no.: **409. 059 640**

Description

The *InterLock* desktop housing has been designed to cover subracks. Also System-Module can be dressed up.

The special design features of the *InterLock* desktop housing:

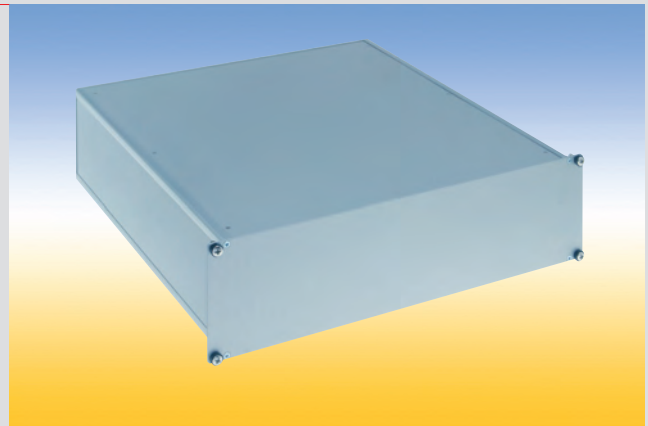
- ✓ The covering elements are formed from recyclable polystyrene plate-material warmly and the joints are welded together by means of a chlorine carbon solution coldly.
- ✓ Material strength of 4 to 10 mm can be processed according to demand of the device.
- ✓ Easy assembly or disassembly of the case shells. Both case shells are locked by a clamp groove without screws.
- ✓ The case is upgradeable by feet and handles.
- ✓ However, on account of an economic manufacturing technology special dimensions or special colors can be also already realised for small quantities at a reasonable price.
- ✓ Extensive range of accessories is available.

Housings

Housings for small form factors

DiVar Housing

- ✓ 19" rack mounted for customized housing
- ✓ Unrestricted configuration and installation
- ✓ Cover plates removable



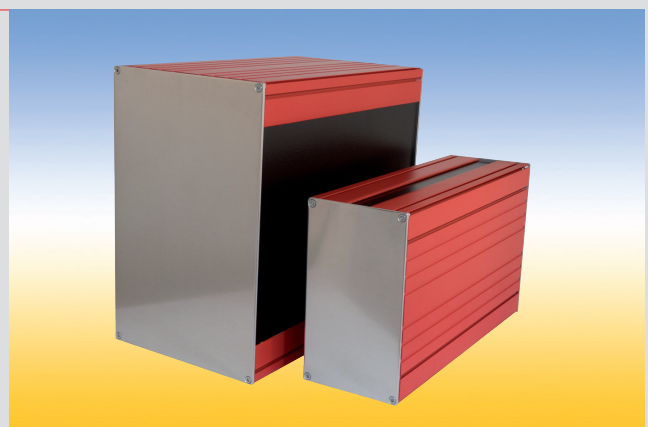
InterShell Housing

- ✓ Customized adjustments
- ✓ Quick and uncomplicated installation
- ✓ Individual color design

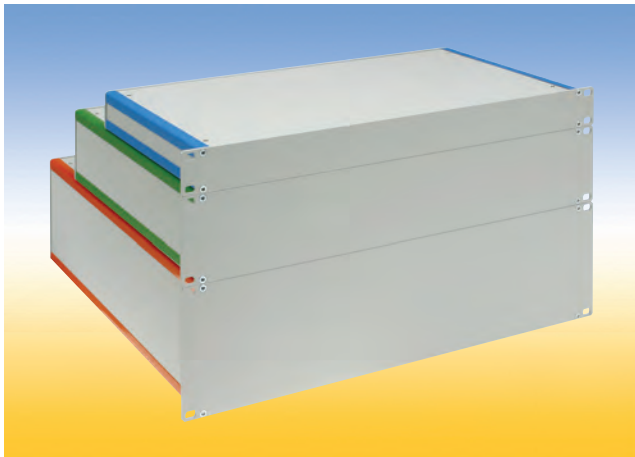


InterShell IP Housing

- ✓ Custom specific adjustments
- ✓ Quick and uncomplicated installation
- ✓ Protection class up to IP 65



DiVar Housing



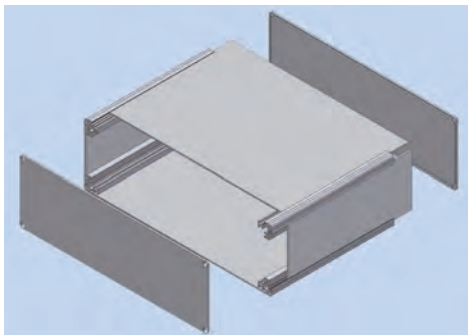
Painting examples of the DiVar housing

Technical Data

Material	aluminum
Finish	profiles: blank cover plates, front panel and side plates: front: anodized, rear: conductive

Delivery

The *DiVar* housing is delivered unassembled as individual parts or as a kit



DiVar housing as individual housing

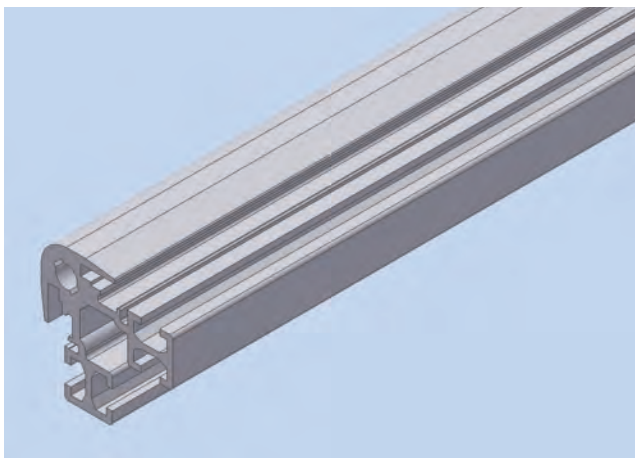
Description

The special design features of the *DiVar* housing:

- ✓ It consists of profiles into which aluminum, sheet steel, stainless steel or plastic panels with a thickness of 1.5 to 2.5 mm are inserted and, if desired, secured with screws. A wall panel at the rear and a panel at the front are screwed to the profiles.
- ✓ The flexible design allows variable configuration of the housing geometry in all three axes, this allowing adaptation of the housing to customer-specific requirements.
- ✓ Different surfaces can be selected for an individual appearance.
- ✓ The proven RFI contact spring concept ensures optimum RFI shielding.
- ✓ Rails with threaded holes can be pressed into the profile grooves, for example to screw in PCBs or mounting plates.
- ✓ The extensive range of Intermas accessories allows unrestricted configuration and installation of both standardized and non-standard components.

The housing can be supplied in 4 versions:

1. Customized housing
2. 19" rack mounted
3. Desktop housing with a keyboard area
4. Desktop housing with a continuous slanting surface



Multifunctional Profile *DiVar*

Material: aluminum
Finish: blank

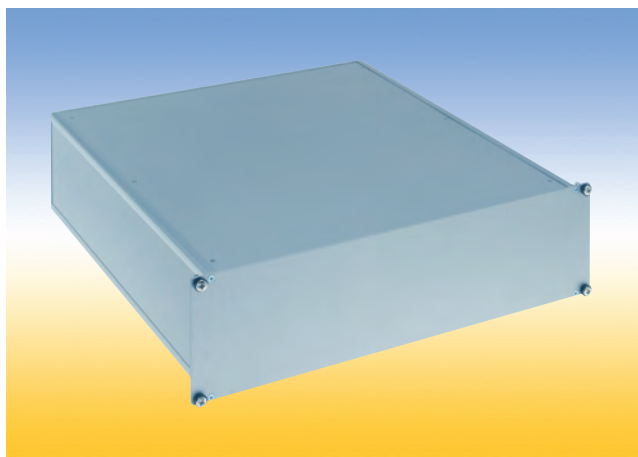
Length: 1000 mm

order no.: **409. 121 808**

Accessories

RFI-spring F3
Length: 399.64 mm

order no.: **409. 111 774**



DiVar Housing as rack mounted version

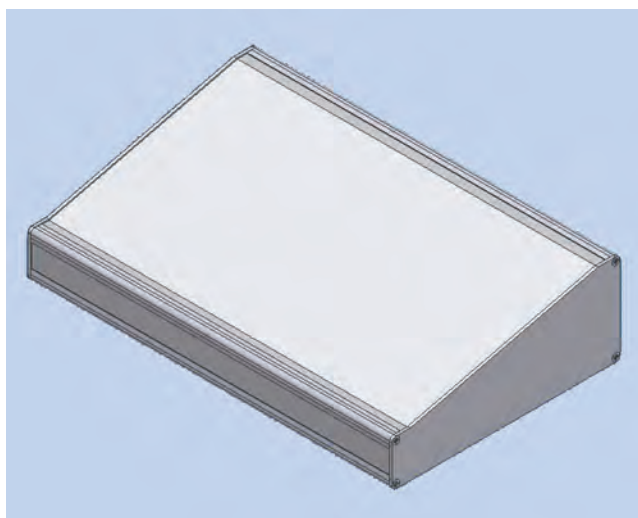
Delivery

4 profiles
4 cover plates
1 19" front panel
1 rear panel
Assembly hardware

Ordering details

DiVar housing as rack mounted version

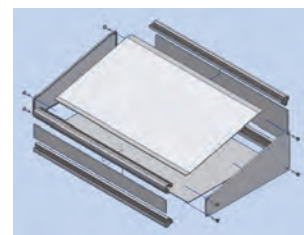
nom. height [U]	width [HP]	depth [mm]	order no. 409.
1	84	250	122 356
2	84	350	122 357
3	84	450	122 358



DiVar Desktop Housing

Delivery

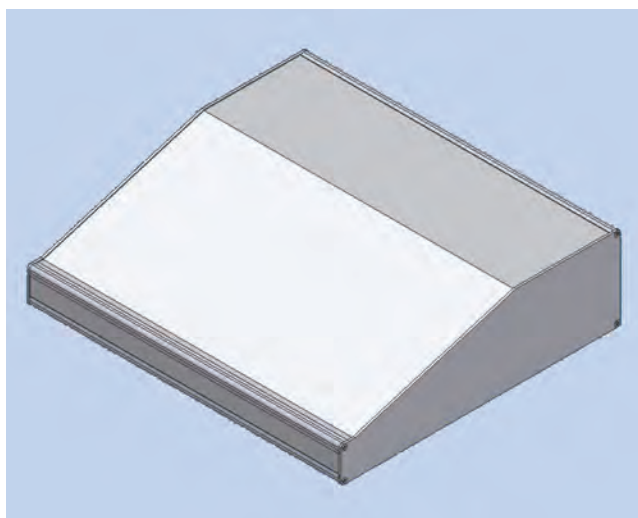
4 profiles
4 cover plates
2 side plates
Assembly hardware



Ordering details

DiVar desktop housing

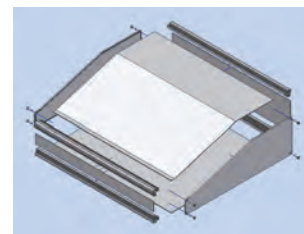
height [mm]	width [mm]	depth [mm]	order no. 409.
50/100	400	250	122 359



DiVar Desktop Housing with keyboard area

Delivery

4 profiles
4 cover plates
2 side plates
Assembly hardware



Ordering details

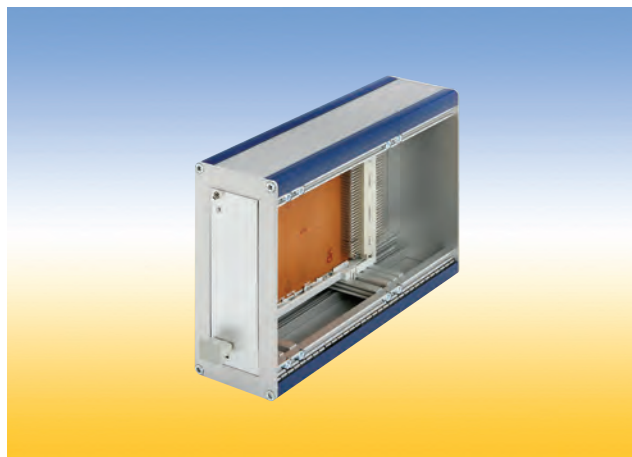
DiVar desktop housing with keyboard area

height [mm]	width [mm]	depth [mm]	order no. 409.
50/120	450	250/150	122 360

DiVar Housing Examples



DiVar housing as covered subrack 3 U - 84 HP - 160 mm depth



DiVar housing as covered cassette 3 U - 8 HP - 160 mm depth



DiVar housing for instrumentation

Please ask your local representative for your
individual configuration.
You find your contact person on our homepage:
www.intermas-el.com



Painting examples of the *InterShell*

Material: Aluminium

Surface : top-shell and bottom-shell
RAL 9006 white aluminum
front panel RAL 9005 - black

Set consists of:

- 1 top-shell
- 1 bottom-shell
- 2 front panels
- 4 countersunk screw

Delivery:

The *InterShell* housing will be delivered fully assembled and painted.

Description

The aluminium housing *InterShell* allows individual customer requirements in the context of Small Form Factors and has the following characteristics:

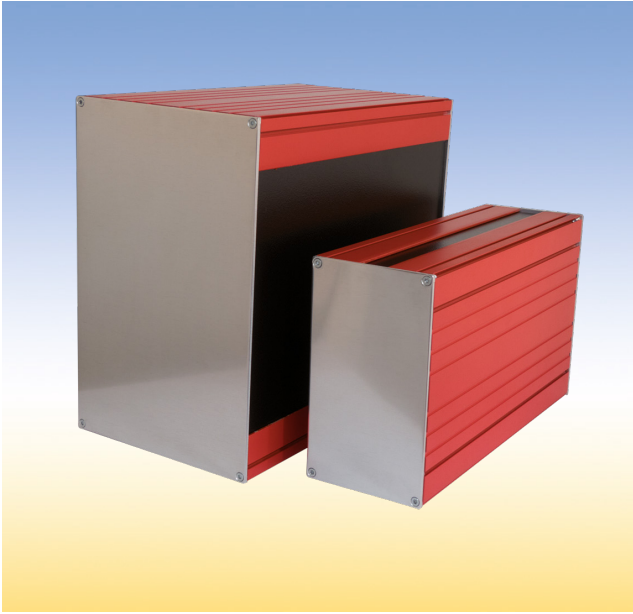
- ✓ Flexible design in all three axes.
- ✓ Quick and simple assembly due to its simple setting.
- ✓ Adapted for packing small electronic units like
 - euroboards in 100 x 160 (mm)
 - customer-specific requirements
 - mITX boards.
- ✓ Protection classes up to IP 40.
- ✓ EMC-compatible.
- ✓ A wide range of surfaces allows individual colour design.
- ✓ Additional imprints according to customers requirements are available.
- ✓ Expandable with adhesive mounting feet.

Order details *InterShell* housing

Usage	height [mm]	width [mm]	depth [mm]	order no. 409.
Euroboard 100 x 160 [mm]	40	106,6	168,2	138 020
Universal	60	150	170	138 021
mITX board, fastening points included	50	190	190	138 022

Accessories	order no. 409.
housing foot 12,7 x 12,7 x 3,1[mm] PU, black	137 981
housing foot 12,7 x 12,7 x 5,8[mm] PU, black	137 982

Housing *InterShell IP*



Painting examples of the InterShell IP

Description

The *InterShell IP* - perfect heavy duty housing. For euroboard cards and customised electronic applications.

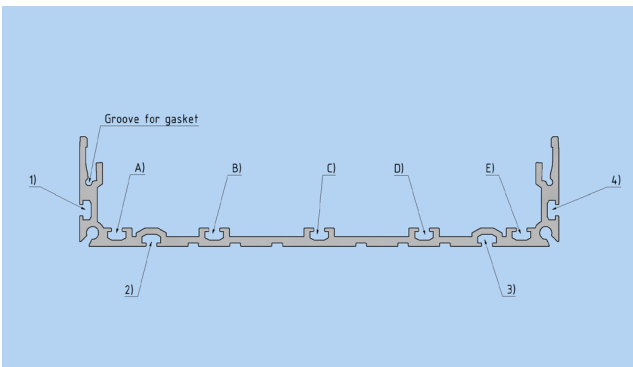
Due to its robustness and tightness up to IP65 it is particularly suitable for mobile applications in the outdoor area as well as desk housing for measuring and test equipment. It is also possible to use the interior for subrack 3HE 42TE.

The small housing *InterShell IP* stands out due to its particular constructive features:

- ✓ The notches outside of the profile can be used for threaded strips (pos. 1-4) or for fittings like clip-angle or stock mounting.
- ✓ The notches internal the profile (5x, pos. A-E) are used for threaded strips and for additional parts like card guides.
- ✓ Alternative surface treatments, e.g. colorless passivation or varnishing of all visible surfaces are possible.
- ✓ Front panel and rear panel are made of 3mm metal sheet. On request, cut-outs for connectors as well as individual printing are possible.
- ✓ Sidewall, front and back panel are made of bright sea water resistant aluminum. Surface treatments are also possible.
- ✓ Front and rear panel are each fitted with 4 counter-sunk screws.
- ✓ A sealing (ø2mm) can be inserted between the profile and the plugged-in side panel to protect against extraneous particles and splashed water.
- ✓ The use of high-quality silicone sealings provides an optimal protection against foreign particles and moisture.
- ✓ Optionally, two conductive variants of sealings are available in order to obtain an optimal EMC-shielding

- Silicone filled with particles of nickel-plated graphite
- Fluorosilicone filled with conductive particles of silver-plated aluminum

- ✓ Feet-kit is available as an option and can be ordered separately.



Position of the notches and sealings

Delivery :

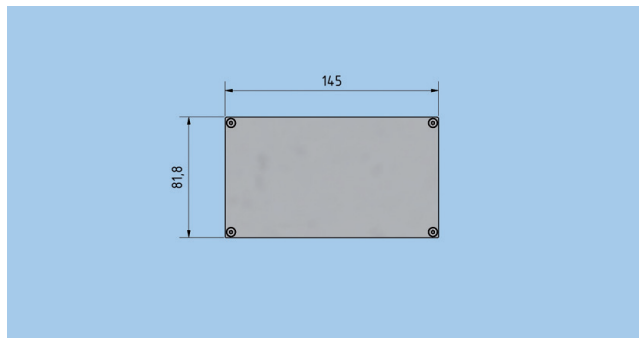
The housings are delivered unassembled as kits. They are packed - depending on quantity - either as kits or same parts packed together.

Upon request, the housings can also be delivered completely assembled and wired according to your requirements.

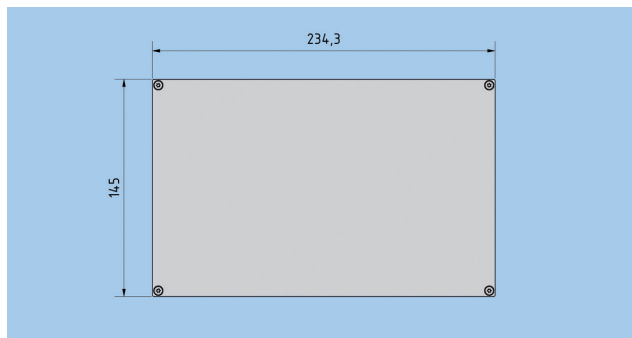
Technical Data

Dimensions	Small housing W 145 mm, H 81,8 mm basic Small housing for subrack 3 U-42 HP, W 234,3 mm, H 145 mm
Usable depth	150, 200, 250 mm (inner dimensions)
Materials	Screws: stainless steel, Assembled and threaded strips: steel or stainless steel profile and side panel: aluminium
Surface	Aluminium parts: blank or colorless passivated Steel parts: galvanized and colourless chromated
Protection class	IP 65 with sealing, otherwise IP43
Temperature range	-35 °C to +80 °C with sealing, otherwise -55 °C to +160 °C
Protective earthing	After assembly all metal parts have an electrically conductive interconnection acc. to VDE 100/12.65, § 6 Nb.

Dimension



Housing InterShell IP basic



Housing InterShell IP for subrack 3 U-42 HP

Version 1

Housing *InterShell IP* basic

Dimension front panel/rear panel

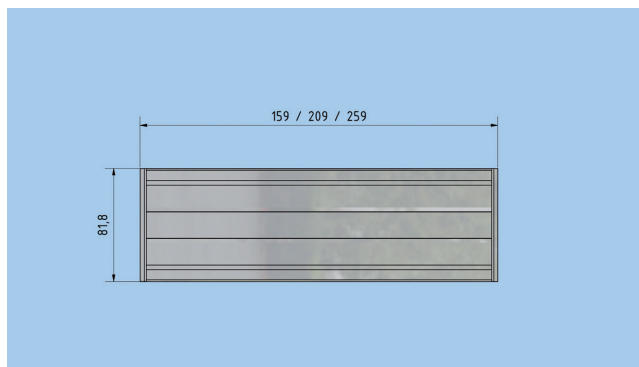
Width 145 mm
Height 81,8 mm

Version 2

Housing *InterShell IP* for subrack 3 U-42 HP

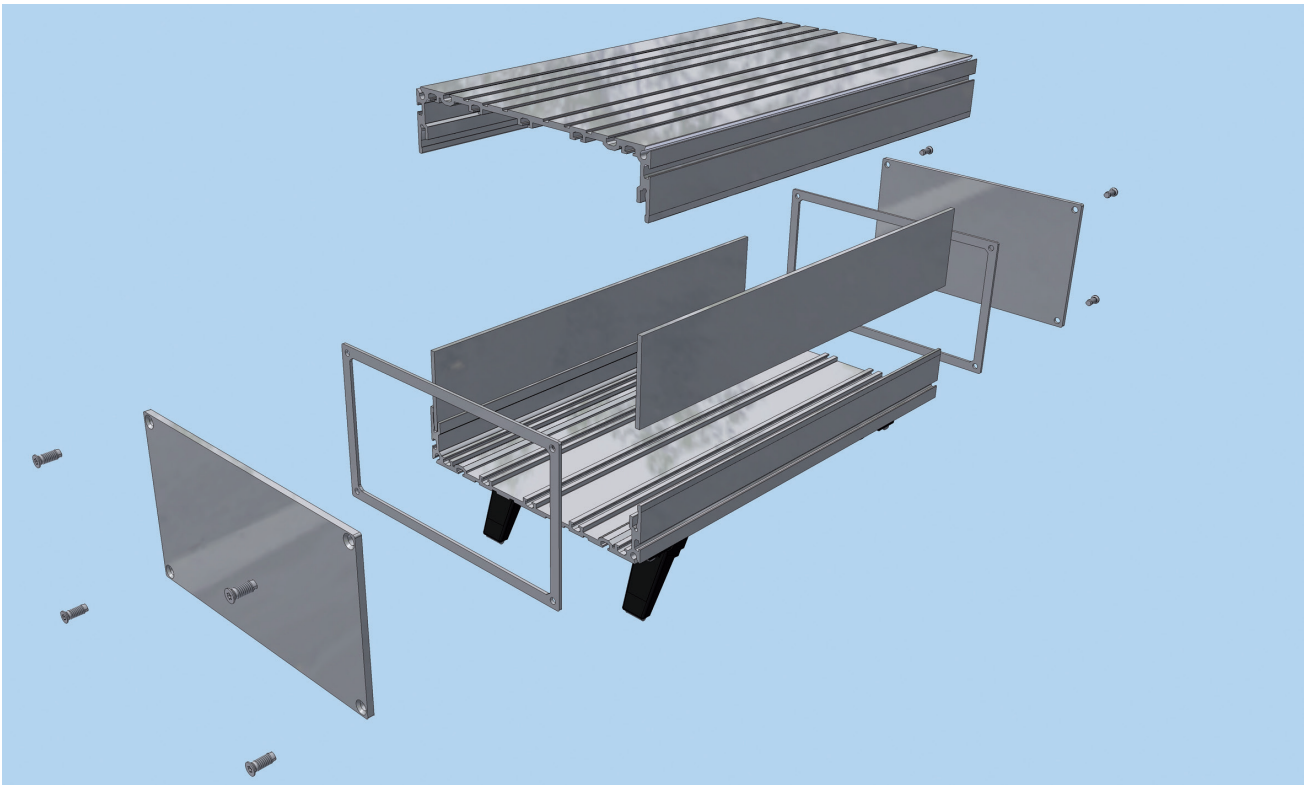
Dimension front panel/rear panel

Width 234,3 mm
Height 145 mm



Housing InterShell IP basic

Housing *InterShell IP*



Version 1

Small housing *InterShell IP* basic

Ordering details

	Order-no. 409.
Depth dimensions 250 mm	180 910
Depth dimensions 200 mm	180 965
Depth dimensions 150 mm	180 967

Scope of delivery

	pieces per kit 250 mm	pieces per kit 200 mm	pieces per kit 150 mm
Half-shell l = 250 mm	2	-	-
Half-shell l = 200 mm	-	2	-
Half-shell l = 150 mm	-	-	2
Countersunk screw M 4 x 10	8	8	8
Cellular rubber Ø 2 mm	1 m	0,8 m	0,6 m
Side panel l = 250 mm	2	-	-
Side panel l = 200 mm	-	2	-
Side panel l = 150 mm	-	-	2
Front panel / back panel	2	2	2
Sealing for housing	2	2	2

Version 2

Housing *InterShell IP* subrack 3 HE-42 TE

Ordering details for kits

	Order-no. 409.
Depth dimensions 250 mm	180 911
Depth dimensions 200 mm	180 966
Depth dimensions 150 mm	180 968

Scope of delivery

	quantity in kit 250 mm	quantity in kit 200 mm	quantity in kit 150 mm
Half-shell I = 250 mm	2	-	-
Half-shell I = 200 mm	-	2	-
Half-shell I = 150 mm	-	-	2
Countersunk screw M 4 x 10	8	8	8
Cellular rubber Ø 2 mm	1 m	0,8 m	0,6 m
Roof panel/floor panel I = 250 mm	2	-	-
Roof panel/floor panel I = 200 mm	-	2	-
Roof panel/floor panel I = 150 mm	-	-	2
Front panel/back panel 3 U 19"	2	2	2
Sealing for housing 3 U 42 HP	2	2	2

The silicon sealings are included in the basic kit.

Sealings made of conductive material must be ordered separately.

Sealings

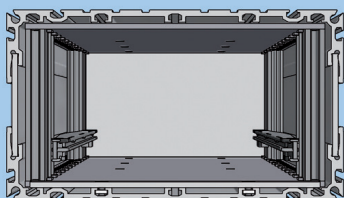
Ordering details conductive sealing

	Fluorosilicone filled with conductive particles of silver-plated aluminum. order-no. 409.	Silicone filled with par- ticles of nickel-plated graphite. order-no. 409.
Version 1 Housing <i>InterShell IP</i> basic	180 913*	180 914*
Version 2 Housing <i>InterShell IP</i> subrack 3 HE-42 TE	180 918*	180 919*

***Remark! Two seals are required per enclosure!**

Housing *InterShell IP*

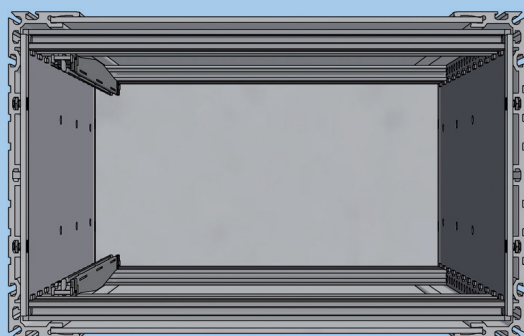
Kit to install 19 inch standard parts

Housing *InterShell IP* basic

Assembly kit 19 inch standard parts Housing *InterShell IP*

Scope of delivery

	quantity in kit
side panel 3 U - 220	2
profile rail U 2 13 HP	4
countersunk screw M 4 x 10	8
stop bar	2
threaded strip M 2,5 x 12 HP	4
countersunk screw M 2,5 x 6	4
square nuts M 2,5	4

Housing *InterShell IP* for subrack 3 U 42 HP

Assembly kit 19 inch standard parts Housing *InterShell IP* for subrack 3 U-42 HP

Scope of delivery

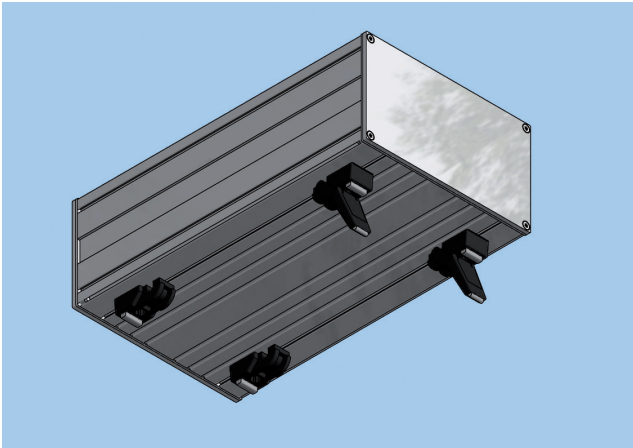
	quantity in kit
side panel 3 U - 220	2
profile rail U 2 13 HP	4
countersunk screw M 4 x 10	8
stop bar	2
threaded strip M 2,5 x 42 HP	4
countersunk screw M 2,5 x 6	4
square nuts M 2,5	4

Ordering details kits

	order-no.
Assembly kit 19 inch standard parts basic <i>InterShell IP</i>	409.
Assembly kit 19 inch standard parts <i>InterShell IP</i> for subrack 3 U-42 HP	180 978
	180 979

Both kits are only suitable for housing depths of 250 mm.

Housing *InterShell IP* Accessories



Housing feet

Foot kit

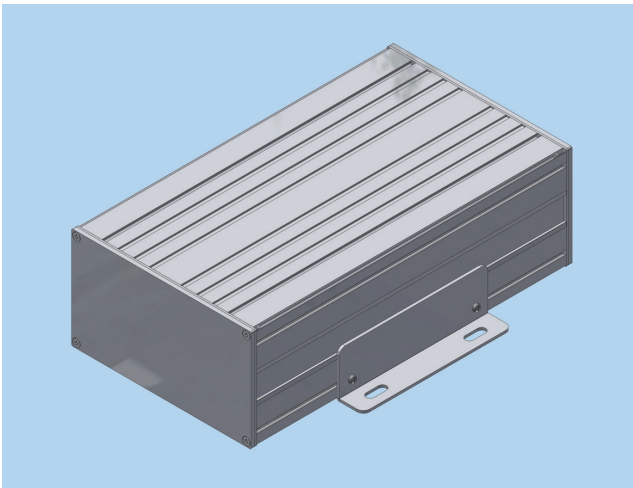
- 4 Feet without put-up hinge
- 2 put-up hinge with rubber
- 4 head screw M 3 x 8
- 4 washer A 3,2
- 4 square nut M 3

Material: ultramid

Color: black

Ordering details for kit

	order no. 409.	Alternative: a kit with 4 adhesive feet is available.
Foot kit	180 982	



Ground mounting

Version 1: Kit for basic housing

- 2 mounting angle
- 4 head screw M 3 x 5
- 4 square nuts M 3

Version 2: Kit for 3U-42HP

- 1 mounting angle right 3 U
- 1 mounting angle left 3 U
- 4 head screw M 3 x 5
- 4 square nut M 3

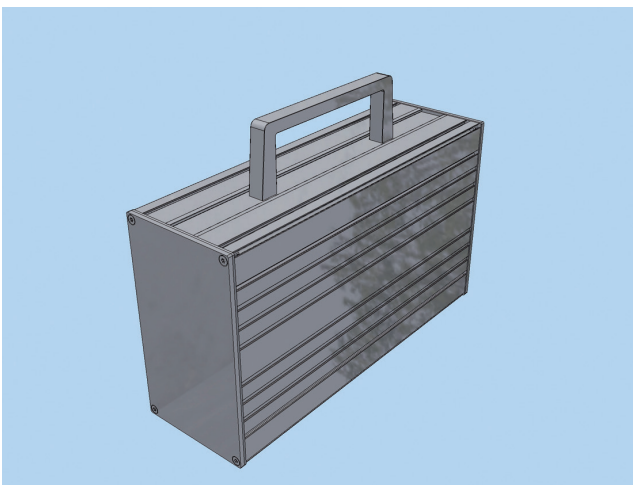
Material: aluminium

Surface: blank

Ordering details for kit

	order no. 409.
ground mounting	180 969
ground mounting 3 U 42 HP	180 970

Both kits are suitable for housing depths of 250/200/150 mm



Handle

Scope of delivery

- 2 countersunk screw M 4 x 12
- 1 handle 3 U

Material: aluminium

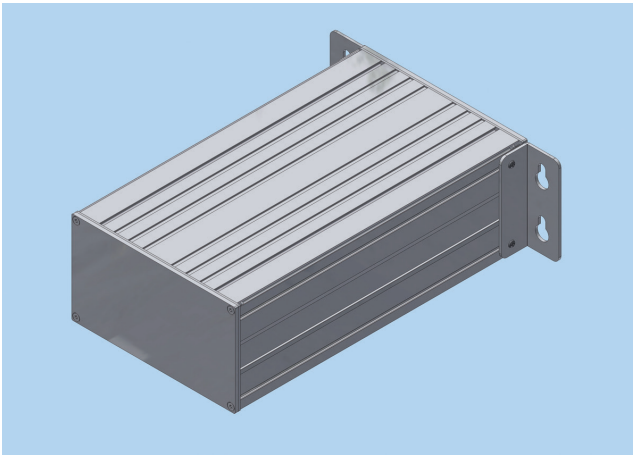
Surface: anodized

Ordering details for kit

	order-no. 409.
handle kit	180 974

Kit only for *InterShell IP* basic version available.
Other handles on request.

Housing InterShell IP Accessories



Wall mounting

Version 1: Kit for basic housing

- 1 mounting angle right
- 1 mounting angle left
- 4 head screw M 3 x 5
- 4 square nut M 3

Version 2: Kit for 3 U-42 HP

- 1 mounting angle right 3 U
- 1 mounting angle left 3 U
- 4 head screw M 3 x 4
- 4 square nut M 3

Material: aluminium

Surface: blank

Ordering details for kit

	order no. 409.
wall mounting kit	180 972
wall mounting kit for 3 U 42 HP	180 973



Angle for stacking

Stock mounting and stock mounting heavy version

scope of delivery for kit

- 2 mounting plate
- 8 head screw M 3 x 5
- 8 square nut M 3

scope of delivery for kit heavy version

- 2 mounting plate heavy version
- 8 head screw M 3 x 5
- 8 square nut M 3

Material: aluminium

Surface: blank

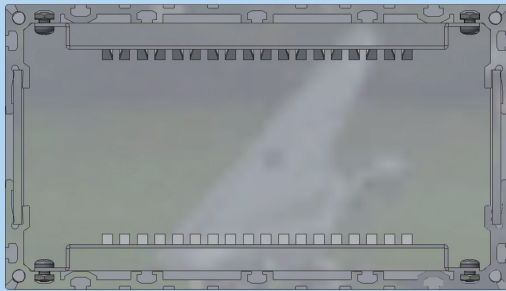
Ordering details for kit

	order no. 409.
mounting angle	180 975
mounting angle heavy	180 976



Angle for stacking - heavy version

Both kits are suitable for housing depths of 250/200/150 mm
Both kits are only available for InterShell IP basic structure.



Card guide 2 U vertikal

Scope of delivery - depth 250/200 mm

- 2 card guide vertikal 2 U für depth 250/200 mm
- 12 head screw M 3 x 4
- 12 square nut M 3

Scope of delivery - depth 150 mm

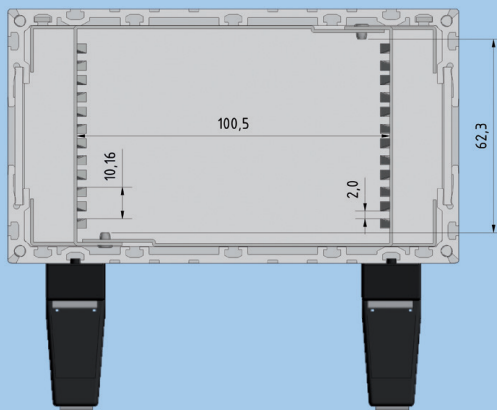
- 2 card guide vertikal 2 U für depth 150 mm
- 12 head screw M 3 x 4
- 12 square nut M 3

Material: steel

Surface : galvanised

Ordering details for kit

	order no. 409.
Kit card guide 2 U 250/200 mm	180 971
Kit card guide 2 U 150 mm	180 981



card cage (horizontal framing for circuit boards as Euro-card format)

Scope of delivery horizontal

- 1 card cage komplett
- 6 head screw M 2,5 x 4
- 2 threaded strip M 2,5 x 39 TE anreihbar

Material: steel

Surface : galvanized

Ordering details for kit

	order no. 409.
Kit card cage	180 977

Kit only suitable for housing depths of 250 mm.
Kit only available for *InterShell IP* basic construction.

Technical changes and errors reserved.