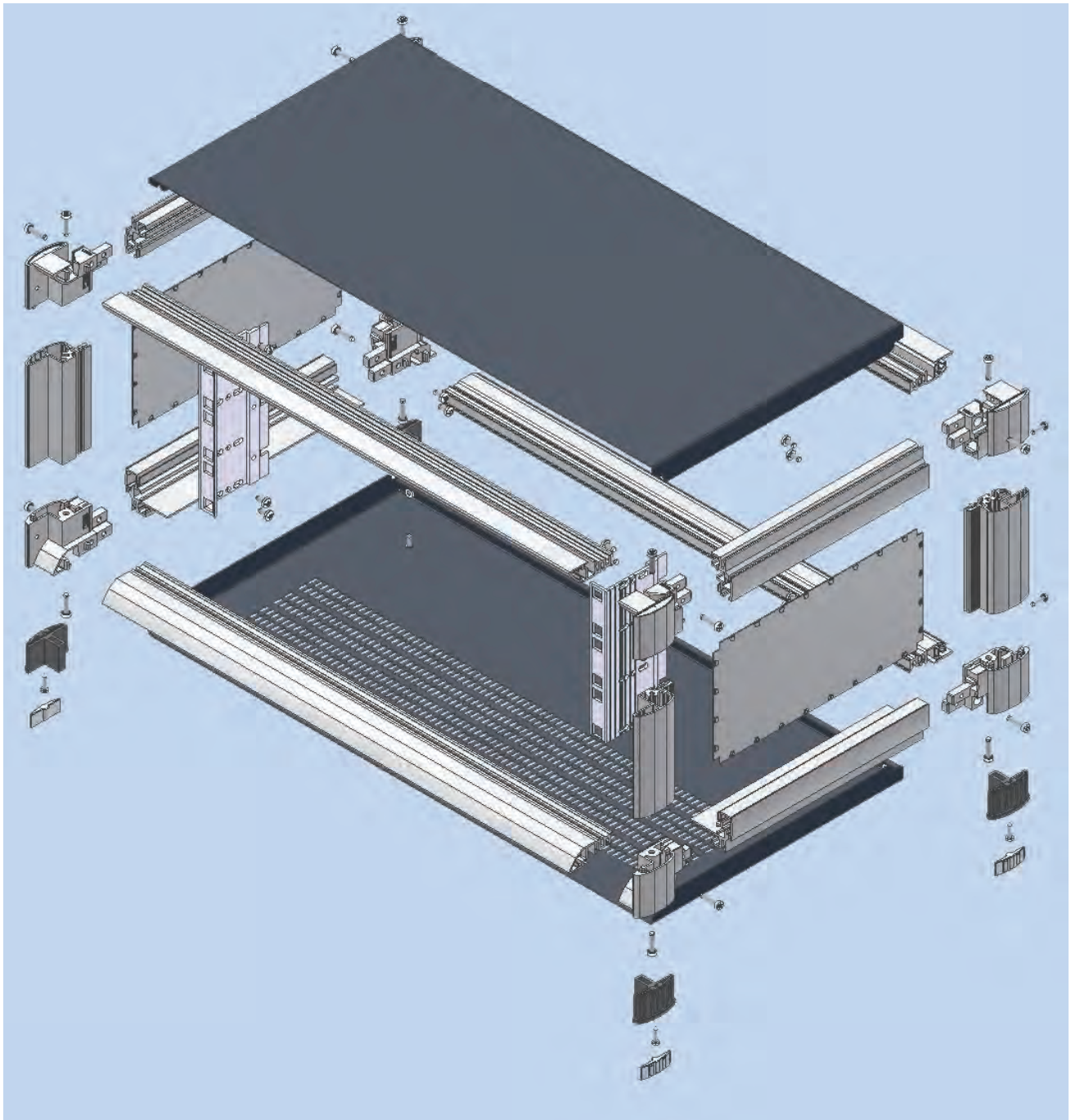


# InterMeZo Housing



## Requirements

A modern housing flexible in its applications, with a modular design, can be RFI-shielded and ventilated, in an attractive design and at a reasonable price: InterMeZo

## Construction

### 1. Housing frame

The InterMeZo housing is based on a framework construction consisting of profiles and corner connectors. This flexible design also enables fast and cost-effective assembly of individual housing sizes.

### 2. Easy to access

For quick access to the installed electronics the cover plates are pressed into profiled grooves and secured with two screws.

### 3. RFI shielding

The side walls are pressed into profile grooves; contact elements ensure RFI-shielded bonding.

To achieve effective protection of the housing against dust and water the cover panels, the rear wall and the door can all be fitted with seals.

Please state RFI requirement when ordering.

## 4. Mechanical sealing

To achieve effective protection of the housing against dust and water the cover panels, the rear wall and the door can all be fitted with seals.

## 5. Recessed grips

Grips for easy transportation are formed by the recessed mounting of the side walls.

## 6. Equipment supports

Subracks can be installed variably as the housing depth permits.

## 7. Chassis panels

The depth profiles are provided with grooves in which chassis panels or similar can be fitted at any depth with the aid of spring nuts.

## Summary

The InterMeZo housing from InterMas is a modular and cost-effective housing solution for high-quality industrial electronics in a visually attractive design, developed for the highest possible flexibility and simplest possible assembly, with expansion capabilities for more demanding needs, compliant with stringent EMI/ESD protection specifications, and with extensive configuration options to fulfil application-specific requirements.

## Technical data

Materials	casing: aluminum profiles corner connectors: die-cast zinc feet: ABS other parts: 0.8 mm galvanized sheet steel
Finish	standard for rear wall and cover panels: painted dark gray (RAL DS 5500) standard for casing and side walls: painted light gray (RAL DS 7000) feet: dark gray

## Versions

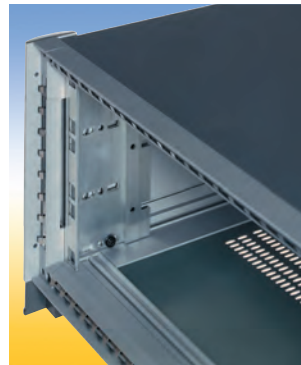
The *InterMeZo housings* are available to assembly 19"- or metric subracks. Alternatively, any dimensions for variable applications are possible.

For all versions the possibility exists to choose between the following types.



### 1. Design front

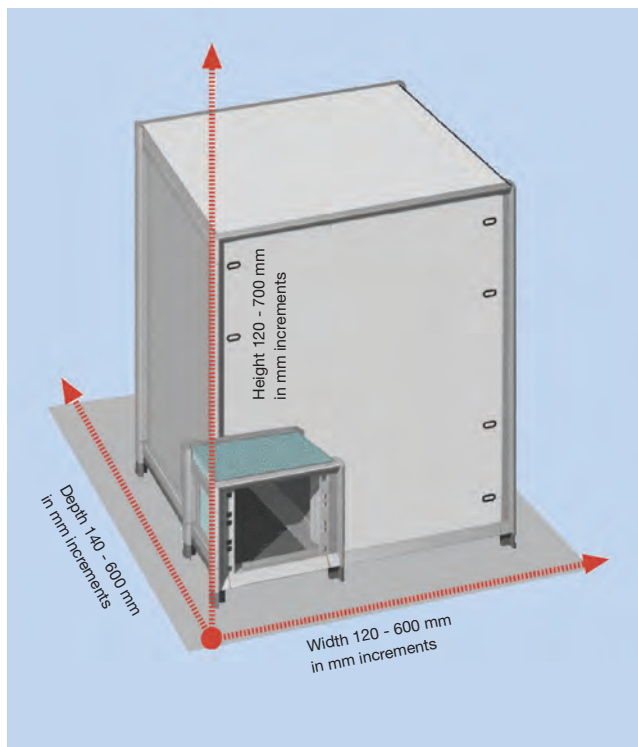
This version has been constructed in terms of a harmonic front design for use with a wide range of applications.



### 2. Functional front

For higher protection against dust and water as well as EMC shielding.

# InterMeZo Housing

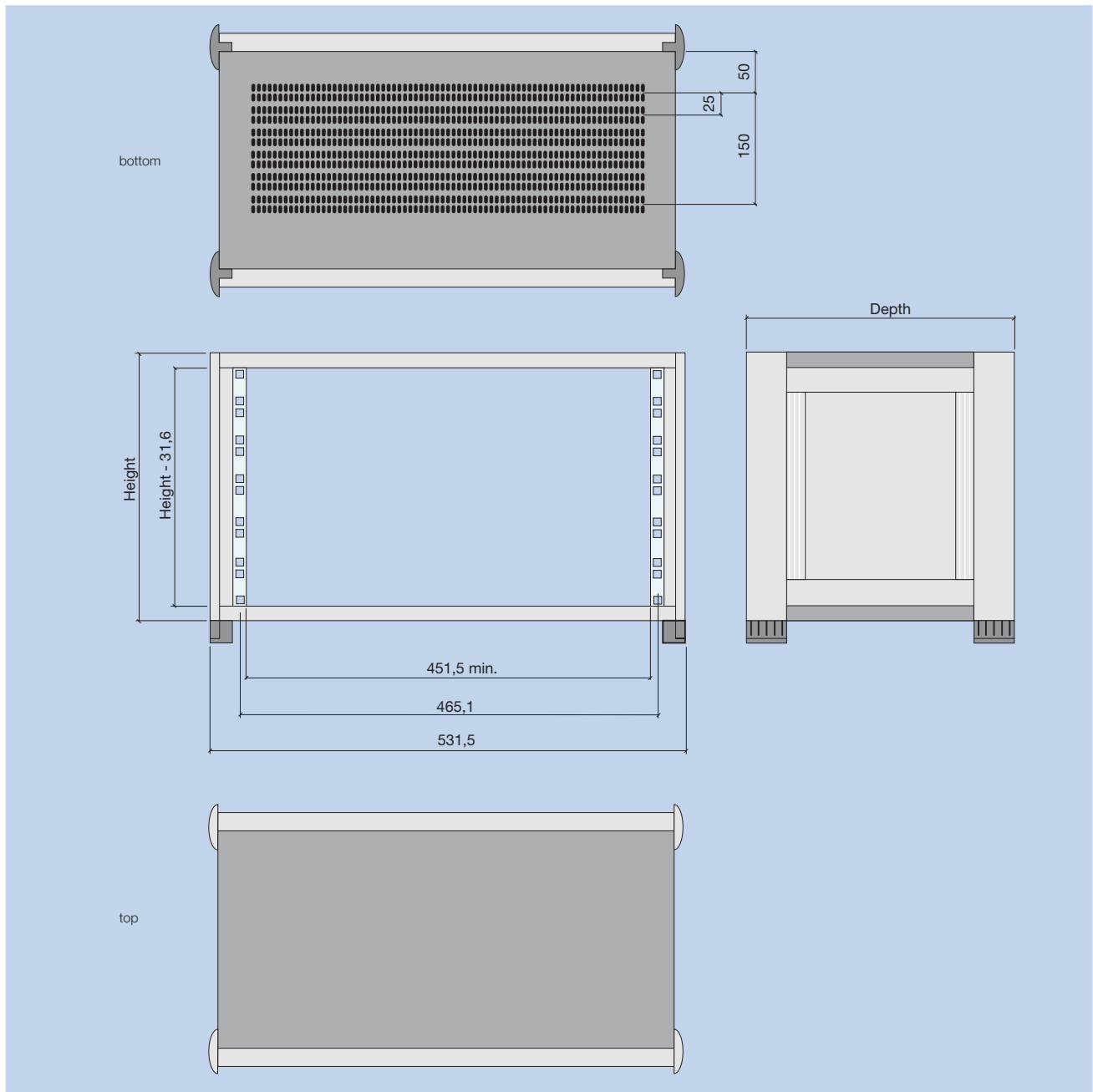


## InterMeZo Housing

<b>Housing</b>	pieces _____	
<b>Dimension</b>	height:	<input type="checkbox"/> 3 U <input type="checkbox"/> 6 U
	width:	<input type="checkbox"/> 84 HP <input type="checkbox"/> 42 HP
	depth:	<input type="checkbox"/> 300 mm
		<input type="checkbox"/> 400 mm <input type="checkbox"/> 500 mm
	<input type="checkbox"/> other: height: _____ U      or _____ mm width: _____ HP      or _____ mm depth: _____ mm	
<b>Design</b>	<input type="checkbox"/> design front	
	<input type="checkbox"/> front <input type="checkbox"/> rear	
	<input type="checkbox"/> functional front	
	<input type="checkbox"/> front <input type="checkbox"/> rear	
<b>Color casing, side wall</b>	<input type="checkbox"/> RAL DS 7000 <input type="checkbox"/> RAL _____	
<b>Color rear wall, panels</b>	<input type="checkbox"/> RAL DS 5500 <input type="checkbox"/> RAL _____	
<b>Louvers in</b>	<input type="checkbox"/> bottom panel	
	<input type="checkbox"/> top panel	
	<input type="checkbox"/> rear panel	

<b>Front</b>	<input type="checkbox"/> Casing door <input type="checkbox"/> Plexiglass door <input type="checkbox"/> Front panel	
<b>19" unit support</b>	<input type="checkbox"/> front <input type="checkbox"/> rear	<input type="checkbox"/> anodized <input type="checkbox"/> RAL _____
<b>Protection class</b>	<input type="checkbox"/> IP _____	
<b>RFI-shielding</b>	<input type="checkbox"/>	
<b>Accessories</b>	<input type="checkbox"/> Rear panel <input type="checkbox"/> Wheels <input type="checkbox"/> Side bars <input type="checkbox"/> Subplate	
	<input type="checkbox"/> Mounting material for subrack and front panels kit _____ pieces	
	_____ _____ _____	
<b>Notes</b>	_____ _____ _____	

Please ask your local representative for your  
**individual system configuration**  
 You find your contact person on our homepage:  
**[www.intermas-el.com](http://www.intermas-el.com)**



## Ordering details for assembled *InterMeZo* housings

nom. height [U]	height [mm]	width [mm]	depth [mm]	design- front order no. <b>409</b>	functional- front order no. <b>409</b>
3	165.60	531.50	300	<b>166208</b>	-
3	165.60	531.50	400	<b>166209</b>	<b>166217</b>
4	210.05	531.50	400	<b>166210</b>	-
6	298.95	531.50	400	<b>166211</b>	<b>166218</b>
6	298.95	531.50	500	<b>166212</b>	-
7	343.40	531.50	400	<b>166213</b>	-
9	432.30	531.50	400	<b>166214</b>	<b>166219</b>
9	432.30	531.50	500	<b>166215</b>	-
12	565.65	531.50	500	<b>166216</b>	<b>166220</b>

## Delivery:

Housing frame with side panels,  
top closed,  
bottom panel with louvers  
4 feet,  
2 unit supports

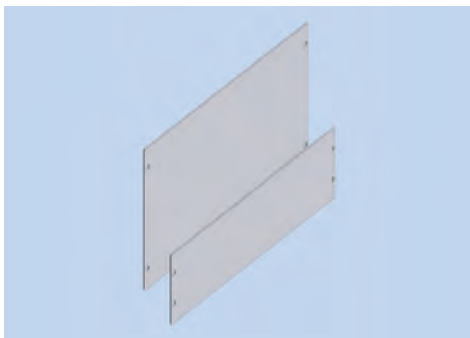
## Delivery:

The housing is delivered  
assembled and painted.

Please state RFI requirement when ordering.

This catalog contains stock and standard parts. Other products and sizes on request.

# InterMeZo Housing Accessories

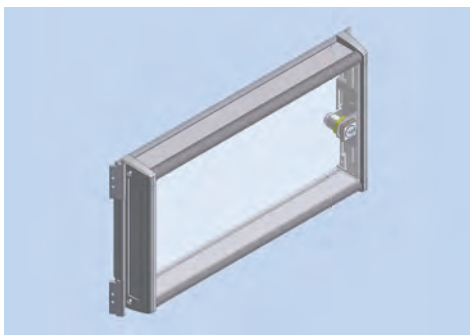


## 19" Front Panels

**Material:** aluminum 3 mm thick  
**Finish:** anodized

## Ordering details for 19" front panels

nom. height [U]	order no. 409
3	086513
4	086514
6	086516
7	086517
9	086519
12	086522



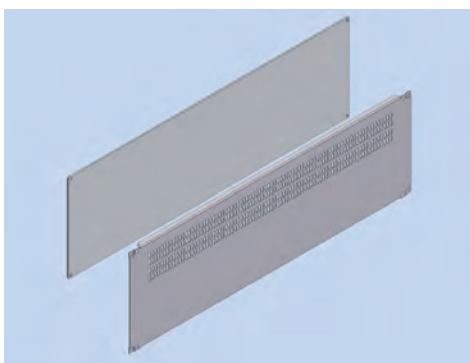
## 19" Casing Door

Kit consists of:  
1 casing door with plexiglass pane  
1 lock  
2 hinges  
Installation hardware

**Delivery:**  
As complete assembled casing door.

## Ordering details for 19" casing door

nom. height [U]	order no. 409
3	110452
4	110453
6	110454
7	110455
9	110456
12	110457



## Rear Panel, closed

**Material:** aluminum 2.5 mm thick  
**Finish:** front side anodized, rear side conductive

## Rear Panel with Louvers

**Material:** steel 0.8 mm thick  
**Finish:** front side RAL DS 5500, rear side conductive

## Ordering details rear panel

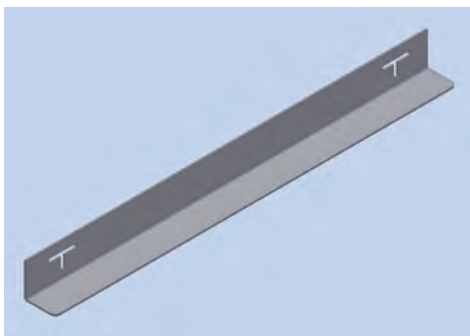
nom. height [U]	closed order no. 409	with louvers order no. 409
3	109984	111556
4	109985	111557
6	109986	111559
7	109987	111560
9	109988	111561
12	110392	111562

## Accessories

### Taptite screw M4x10

Minimum order quantity 100 pieces

order-no.: 409110395



## Slide Bars

Kit consists of:  
2 slide bars  
Installation hardware

**Material:** 1.5 mm galvanized sheet steel

**Finish:** passivated

## Ordering details kit

	for housing-depth [mm]	order no. 409
slide bar	300	111285
slide bar	400	111286
slide bar	500	111287





## RFI-Shielding

**Material:** stainless steel

Standard housings are not retrofittable.  
Please state when ordering.

## Ordering details RFI-shielding-kit for rear/front panel

nom. height [U]	order no. 409
3	110360
6	110361
9	110366
12	110367

## Ordering details RFI-shielding-kit for cover plates

depth [mm]	order no. 409
300	110368
400	110370
500	110372



## Unit Support

Kit consists of:  
2 unit supports and  
Installation hardware

## Ordering details for unit support kit

nom. height [U]	order no. 409
3	110375
4	110376
6	110378
7	110379
9	110381
12	110382



## Mounting material for subracks and front panels in housing

### Screw Locking M6

**Color:** black

**Material:** POM

Minimum order quantity 10 pieces

order no.: 409074387

### Oval Head Screw

**M6 x 16** DIN 7985

steel, nickel plated

Minimum order quantity 10 pieces

order no.: 409013919

### Cage Nut

steel, galvanized

Minimum order quantity 10 pieces

order no.: 409131652



## Castors

Kit consists of:  
2 mounting angles  
4 castors  
Installation hardware

## Ordering details for castor kit

	housing-depth [mm]	order no. 409
castors 300	300	112092
castors 400	400	112093
castors 500	500	112094

Castors are not retrofittable.  
Please order with housing.