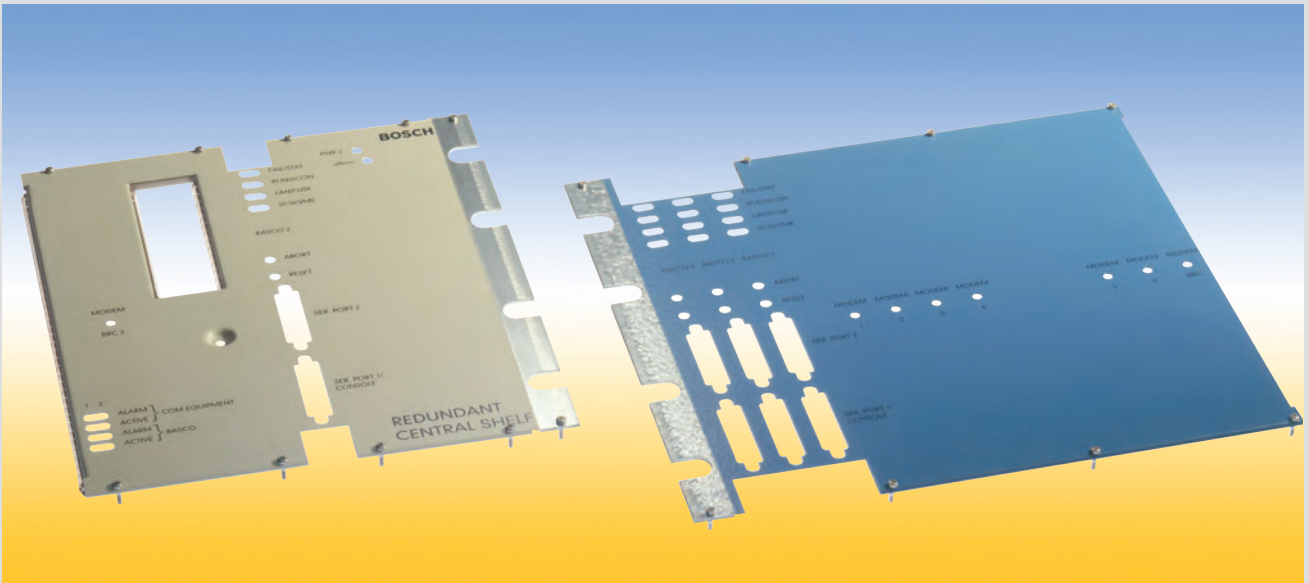


Front Panels



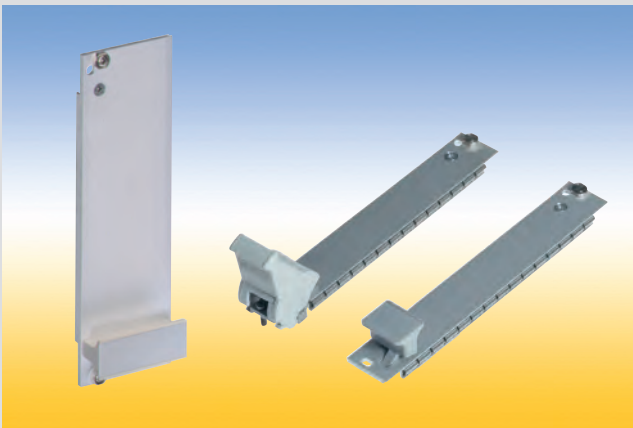
In addition to the wide range of standard front panels we also provide on request individual customer specific front panels with punching, surface finish and silk screening.
Textured or smooth painted in all relevant RAL-colors, abrasion-resistant silk-screen printing as well as color coordinated engraving give your front panel an individual appearance.

Please ask your local representative for your
individual front panel design.
You find your contact person on our homepage:
www.intermas-el.com

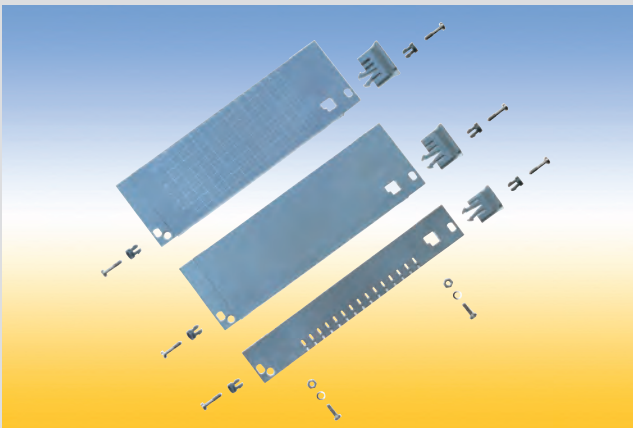
Front Panels and Handles



- ✓ Blind Front Panels

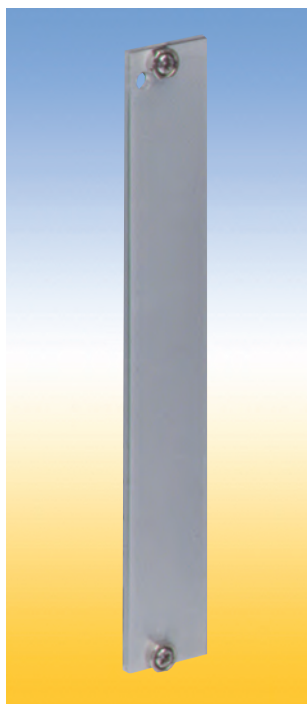


- ✓ Front Panels with Handle
- ✓ Handles
- ✓ Front Panels with Ejector Handle
- ✓ Ejector Handles
- ✓ Front Panels with IEEE Handle
- ✓ IEEE-Handles



- ✓ Plastic Front Panels

Blind Front Panels



Blind Front Panels

For covering empty sections or to carry various components in subracks.

Four versions are available:

1. Flat front panel blank

The front side is covered with a removable transparent foil.

2. Flat front panel anodized

Front anodized, rear conductive.

3. Flat front panel RFI

Front anodized, rear conductive, with slits in the side edges for insertion of RFI springs.

4. Extruded front panel RFI

Made of extruded aluminum alloy, with slits in the side edges for insertion of RFI springs for contact.

Surface finish is passivated.

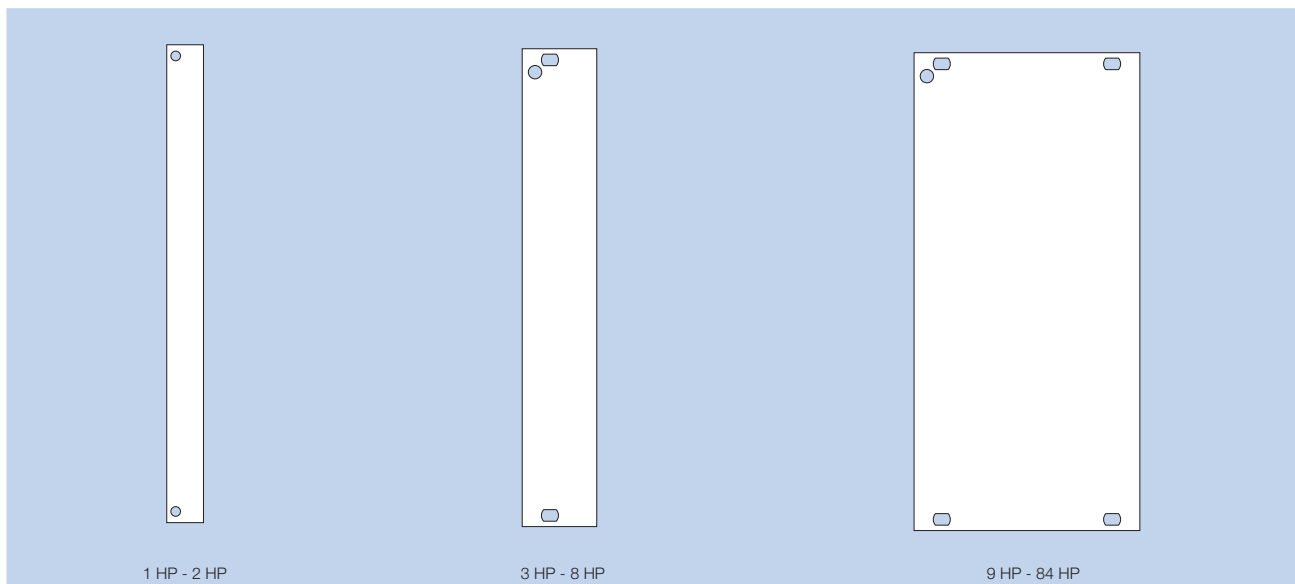
Material

Flat front panel: aluminum 2.5 mm thick

Extruded front panel: aluminum

Delivery

Front panels are delivered unassembled as single parts or as a kit.



Blind Front Panels

Ordering details blind front panels (flat front panel)

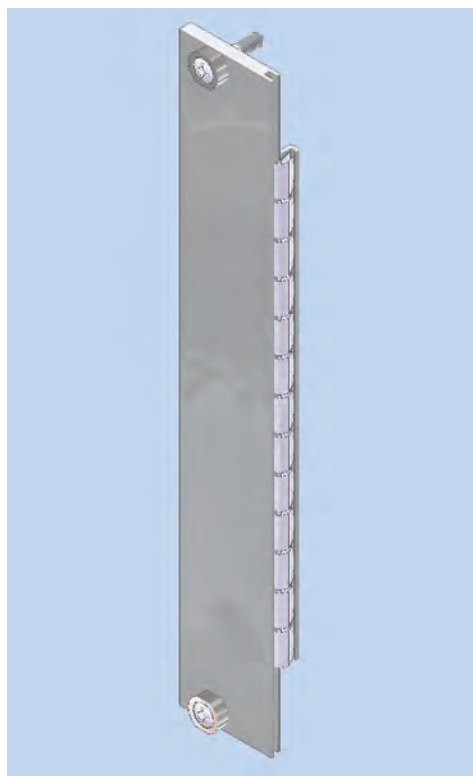
		3 U	3 U	6 U	6 U
	nom. width [HP]	blank order no. 409	anodized/ conductive order no. 409	blank order no. 409	anodized/ conductive order no. 409
Blind front panel	1	097201	-	097601	-
Blind front panel	2	097202	-	097602	-
Blind front panel	3	097203	-	097603	-
Blind front panel	4	097204	097404	097604	097804
Blind front panel	5	097205	-	097605	-
Blind front panel	6	097206	097406	097606	097806
Blind front panel	7	097207	-	097607	-
Blind front panel	8	097208	097408	097608	097808
Blind front panel	10	097210	-	097610	-
Blind front panel	12	097212	097412	097612	097812
Blind front panel	14	097214	097414	097614	097814
Blind front panel	21	097221	097421	097621	097821
Blind front panel	28	097228	097428	097628	097828
Blind front panel	42	097242	097442	097642	097842
Blind front panel	84	097284	097484	097684	097884

Accessories

Minimum order quantity 100 pieces

	pieces for 1-2 HP	pieces for 3-8 HP	pieces for 9-85 HP	order no. 409
Screw retainer M2.5 gray	-	2	4	100539
Screw retainer M2.5 black	-	2	4	100538
Pan Head Screw M 2.5 x 11.3	2	2	4	101917

Blind Front Panels RFI



Subrack Accessories

Ordering details kit - blind front panel RFI

nom. width [HP]	3 U extruded order no. 409	3 U order no. 409	6 U extruded order no. 409	6 U order no. 409
1	114453	-	114464	-
2	114454	-	114465	-
3	114455	-	114466	-
4	114361	113583	114387	-
5	114362	-	114388	-
6	114363	113586	114389	-
7	114365	-	114390	-
8	114366	-	114391	-
9	114367	-	114392	-
10	114368	-	114393	-
12	-	113589	-	113608
14	-	113590	-	113609
21	-	113592	-	113611
28	-	113593	-	113612
42	-	113594	-	113613
43	-	114487	-	-
84	-	113595	-	113614
85	-	113596	-	-

Finish: flat front panel: front side anodized, rear side conductive
extruded front panel: passivated

Delivery kit - blind front panel RFI:

	pieces for 1-2 HP	pieces for 3-8 HP	pieces for 9-43 HP	pieces for 44-85 HP
Front panel	1	1	1	1
	1 / 2	1 / 2	1 / 2	1 / 2
Press-fit bushing M2.5	-	2	4	6
Mounting parts-kit	1	1	1	1

Accessories

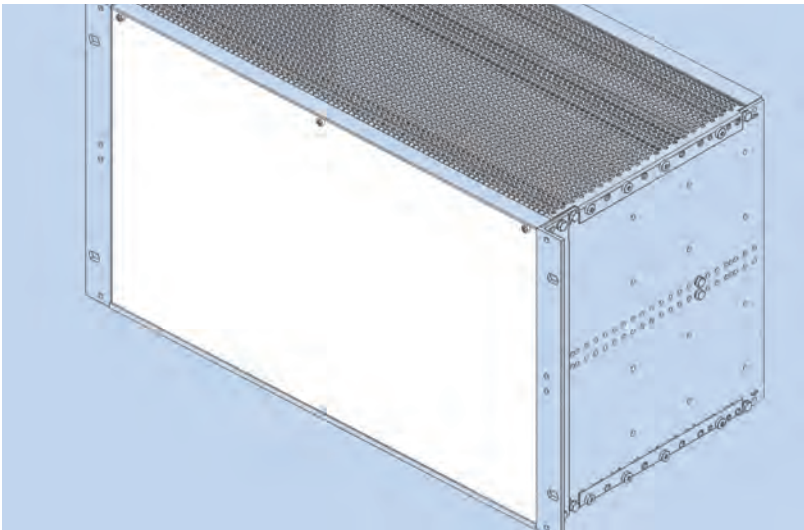
Roller cutter to assemble the RFI spring F3

order no.: 409118433

Ordering details single part blind front panel RFI

nom. width [HP]	3 U extruded order no. 409	3 U order no. 409	6 U extruded order no. 409	6 U order no. 409
1	114458	-	114469	-
2	114459	-	114470	-
3	113027	-	114476	-
4	111608	112252	111618	-
5	113028	-	114384	-
6	111609	112258	111619	-
7	111610	-	111620	-
8	111611	-	111621	-
9	113029	-	114385	-
10	113030	-	114386	-
12	-	112551	-	112611
14	-	112557	-	112617
21	-	112578	-	112638
28	-	112821	-	112943
42	-	112581	-	112641
43	-	114082	-	-
84	-	113598	-	113617
85	-	113599	-	-

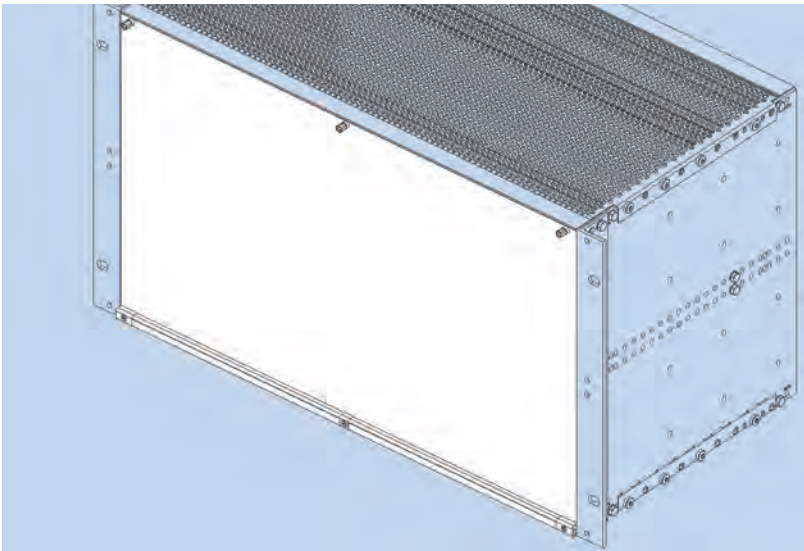
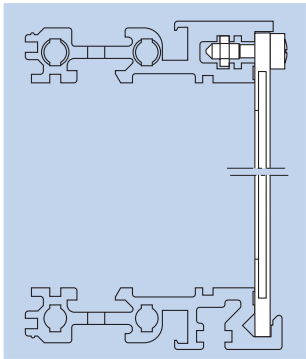
Front Panels plug-in, hinged



Accessories

	order no. 409
Pr rail VE12SFP-RFI-85	114562
Flange RFI - FP - 3 U	114708
Flange RFI - FP - 6 U	114715
RFI spring F3 - 3U	111112
RFI spring F3 - 6U	111116

For one front panel 2 RFI springs are needed.



Accessories

	order no. 409
Threaded strip 84 HP	131478
Flange RFI - FP - 3 U	114708
Flange RFI - FP - 6 U	114715
RFI spring F3 - 3U	111112
RFI spring F3 - 6U	111116

For one front panel 2 RFI springs are needed.

Plug-in Front Panel 85 HP

The front panel bottom edge is inserted in the groove of a specially profiled rail. With slits in the side edges for insertion of RFI springs.
To be used in combination with below mentioned flanges only.

Finish:

front side anodized, rear side conductive

Delivery:

- 1 front panel
- 3 press-fit bushing M 2.5
- 3 cross-head screw M 2.5 x 11.3

Ordering details for kit

	order no. 409
Plug-in front panel 3 U	113948
Plug-in front panel 6 U	113950

Hinged Front Panel 85 HP

With slits in the side edges for insertion of RFI springs. The hinge is screwed to the prprofiled rail of the subrack. An 84 HP threaded strip is needed.
To be used in combination with below mentioned flanges only.

Finish:

front side anodized, rear side conductive

Delivery:

- 1 front panel
- 1 hinge
- 3 press-fit bushings
- Mounting parts

Delivery: as unassembled kit.
Assembled kits on request.

Ordering details for kit

	order no. 409
Hinged front panel 3 U	113705
Hinged front panel 6 U	113706

Front Panels with Handle



Front Panels with Handle

For assembly on a PCB.

Handle and front connector are screwed on the front panel.

The plain front panel is easy to modify.

Four versions are available:

1. Flat front panel blank

The front side is covered with a removable transparent foil.

2. Flat front panel anodized

Front anodized, rear conductive.

3. Flat front panel RFI

Front anodized, rear conductive.

With slits in the side edges for insertion of RFI springs.

4. Extruded front panel RFI

Made of extruded aluminum alloy, with slits in the side edges for insertion of RFI springs for contact.

Surface finish is passivated.

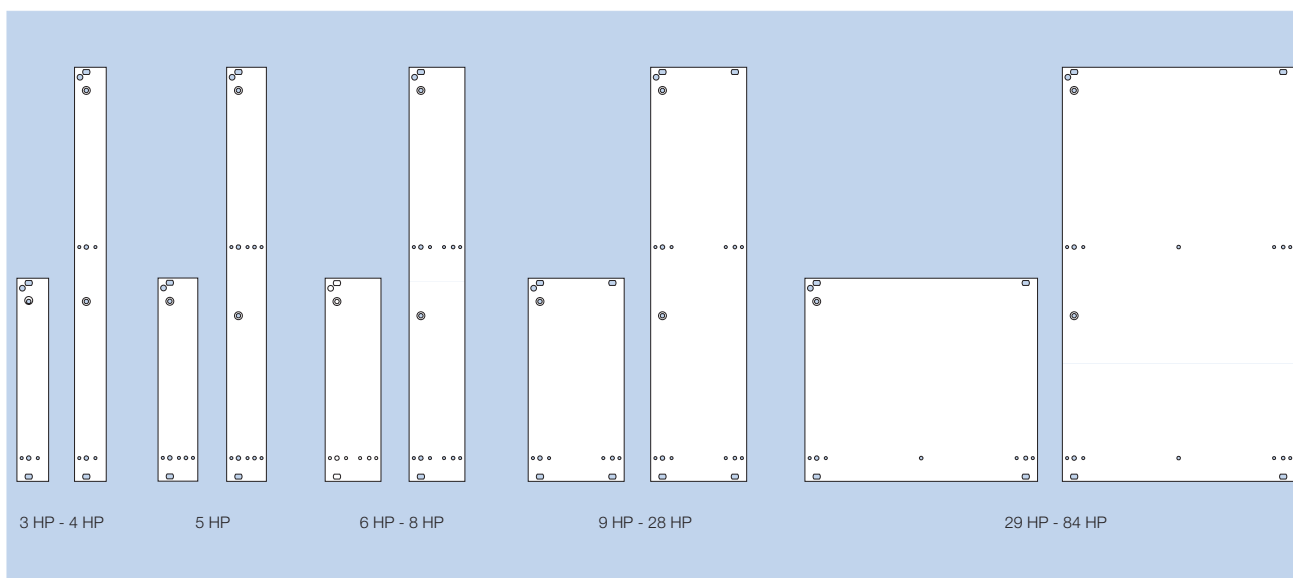
Material

Flat front panel: aluminum 2.5 mm thick

Extruded front panel: aluminum

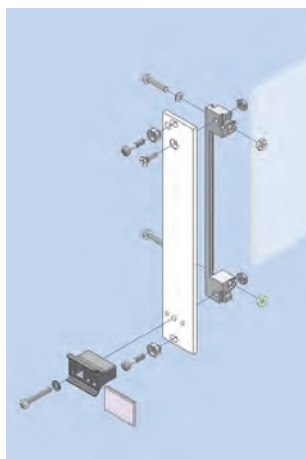
Delivery

Front panels are delivered unassembled as single parts or as a kit.



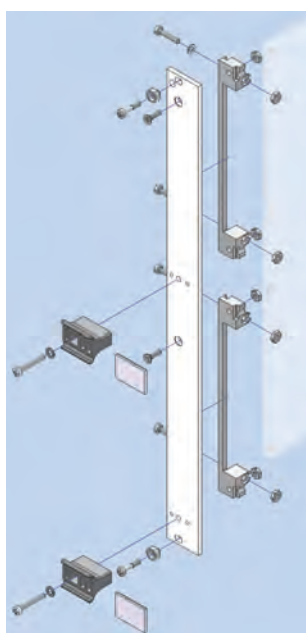
Hole pattern of the front panels

Front Panels with Handle



Ordering details kit - front panel with handle (flat front panels)

nom. width [HP]	3 U anodized/ conductive order no. 409	6 U anodized/ conductive order no. 409
4	107518	122624
6	122622	122625
8	107520	122626
10	107521	122627
12	107522	122628



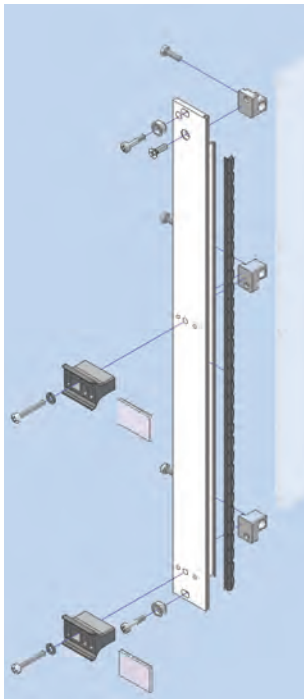
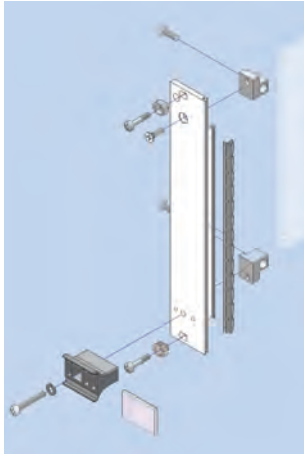
Delivery kit - front panel with handle

	3 U pieces for 3-8 HP	3 U pieces for 9-12 HP	6 U pieces for 3-8 HP	6 U pieces for 9-12 HP
Front panel	1	1	1	1
Handle gray	1	1	2	2
Ident-plate aluminum	1	1	2	2
Front connector FEE	1	1	2	2
Screw retainer M 2.5	2	4	2	4
Mounting parts	1	1	1	1

Ordering details - single part front panel for handle (flat front panel)

nom. width [HP]	3 U blank order no. 409	3 U anodized/ conductive order no. 409	6 U blank order no. 409	6 U anodized/ conductive order no. 409
3	096403	-	096703	-
4	096404	096604	096704	096904
5	096405	096605	096705	096905
6	096406	096606	096706	096906
7	096407	-	096707	-
8	096408	096608	096708	096908
10	096410	096610	096710	096910
12	096412	096612	096712	096912
16	096416	-	096716	-
21	096 421	-	096721	-

Front Panels RFI with Handle



Ordering details kit - front panel RFI with handle

	3 U extruded order no. 409	3 U order no. 409	6 U extruded order no. 409	6 U order no. 409
nom. width [HP]				
3	114537	-	114541	-
4	114377	-	114404	-
5	114378	-	114405	-
6	114379	-	114406	-
7	114380	-	114407	-
8	114381	-	114408	-
10	114383	-	114410	-
12	-	113685	-	113693

Finish:

Flat front panel: front side anodized, rear side conductive
Extruded front panel: passivated

Delivery kit - front panel RFI with handle

	3 U pieces for 3-8 HP	3 U pieces for 9-12 HP	6 U pieces for 3-8 HP	6 U pieces for 9-12 HP
Front panel	1	1	1	1
Handle gray	1	1	2	2
Ident-plate aluminum	1	1	2	2
Front connector metal	2	2	3	3
Press-fit bushing M 2.5	2	4	2	4
Mounting parts	1	1	1	1

Accessories

	order no. 409
For one flat front panel 2 RFI-springs are needed.	
RFI spring F3 - 3U	111112
RFI spring F3 - 6U	111116
For assemble the RFI spring F3	
Roller cutter	118433

Ordering details single part front panel RFI for handle

	3 U extruded order no. 409	3 U order no. 409	6 U extruded order no. 409	6 U order no. 409
nom. width [HP]				
3	114538	-	114540	-
4	114370	113711	114396	-
5	114371	-	114397	-
6	114372	113723	114399	-
7	114373	-	114400	-
8	114374	113725	114401	-
10	114376	-	114403	-
12	-	113729	-	113762

Handle and Handle Strip

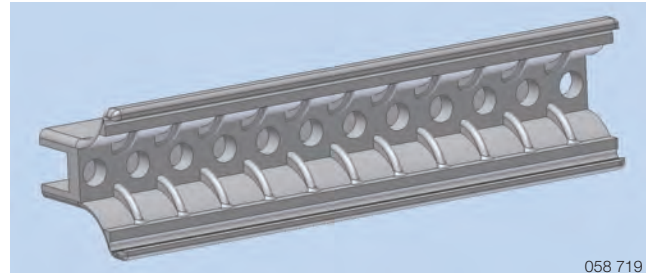


Handle FP

Assembled with M2.5 screws and with 1 additional self tapping screw from 6 HP. The handle is held against torsion by means of two nipples.

Technical data

Material	Polycarbonate, 10% fiber-glass reinforced
Color	gray RAL 7032, black
Continuous temperature	- 40 °C to + 100 °C
Fire protection class	UL 94 V-0



058 719

Ordering details handle FP

width [HP]	length [mm]	gray order no. 409	black order no. 409
3	13.80	102115	041657
4	18.88	102114	100667
5	23.96	103005	103205
6	29.04	103006	103206
7	34.12	103007	103207
8	39.20	103008	103208

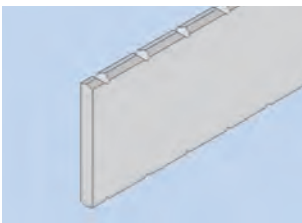
Ordering details handle strip FP

width [HP]	length [mm]	gray order no. 409	black order no. 409
10	49.36	103810	058910
12	59.52	103812	058912
16	79.84	103816	058916
21	105.24	103821	058921
42	211.92	103842	058942

Accessories handles:

Minimum order quantity each 100 pieces

	order no. 409
Pan head screw M 2.5 x 16	094605
Washer 2.7	013911
Hexagonal nut M 2.5 DIN 439	013938
Self tapping screw M 2.5 x 10	040401



Ident Plate

for handle FP.
The ident plate is markable and printable, snapped in after mounting the handle to the front panel.

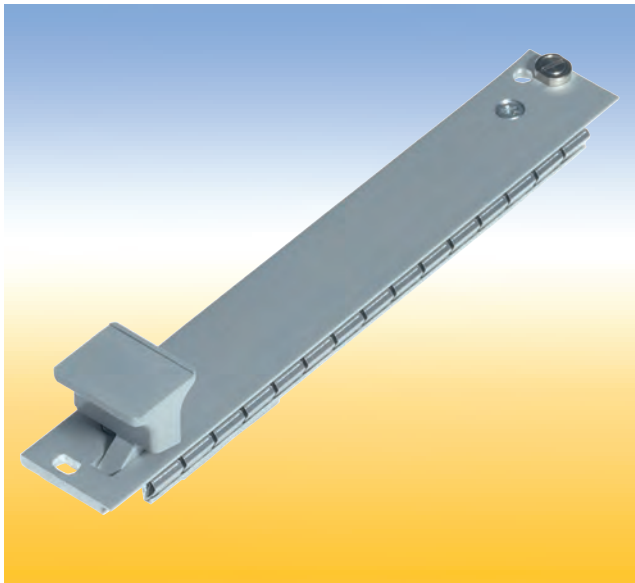
Ordering details ident-plate

width [HP]	length [mm]	aluminum order no. 409	crystal clear order no. 409
3	13.80	017929	089238
4	18.88	017956	089240
5	23.96	022791	-
6	29.04	022792	-
7	34.12	022793	-
8	39.20	022794	-
10	49.36	022796	-
12	59.52	022798	-
16	79.84	022802	-
21	105.24	022807	-
42	211.92	040652	-

Technical data

Material	aluminum or Polycarbonate, crystal clear
Finish	Alu: silver silk-anodized
Continuous temperature	PC: - 40 °C to + 115 °C
Fire protection class	PC: UL 94 V-2

Front Panels with Ejector Handle



Front Panels with Ejector Handle

For easy release of PCB's with high pin connections. The ejector handle is extends through the front panel and is screwed together with the bearing bushing at the front connector.

Four versions are available:

1. Flat front panel blank.
The front side is covered with a removable transparent foil.
2. Flat front panel anodized.
Front anodized, rear conductive.
3. Flat front panel RFI
Front anodized, rear conductive. With slits in the side edges for insertion of RFI springs.
4. Extruded front panel RFI
Made of extruded aluminum alloy, with slits in the side edges for insertion of RFI springs for contact. Surface finish is passivated.

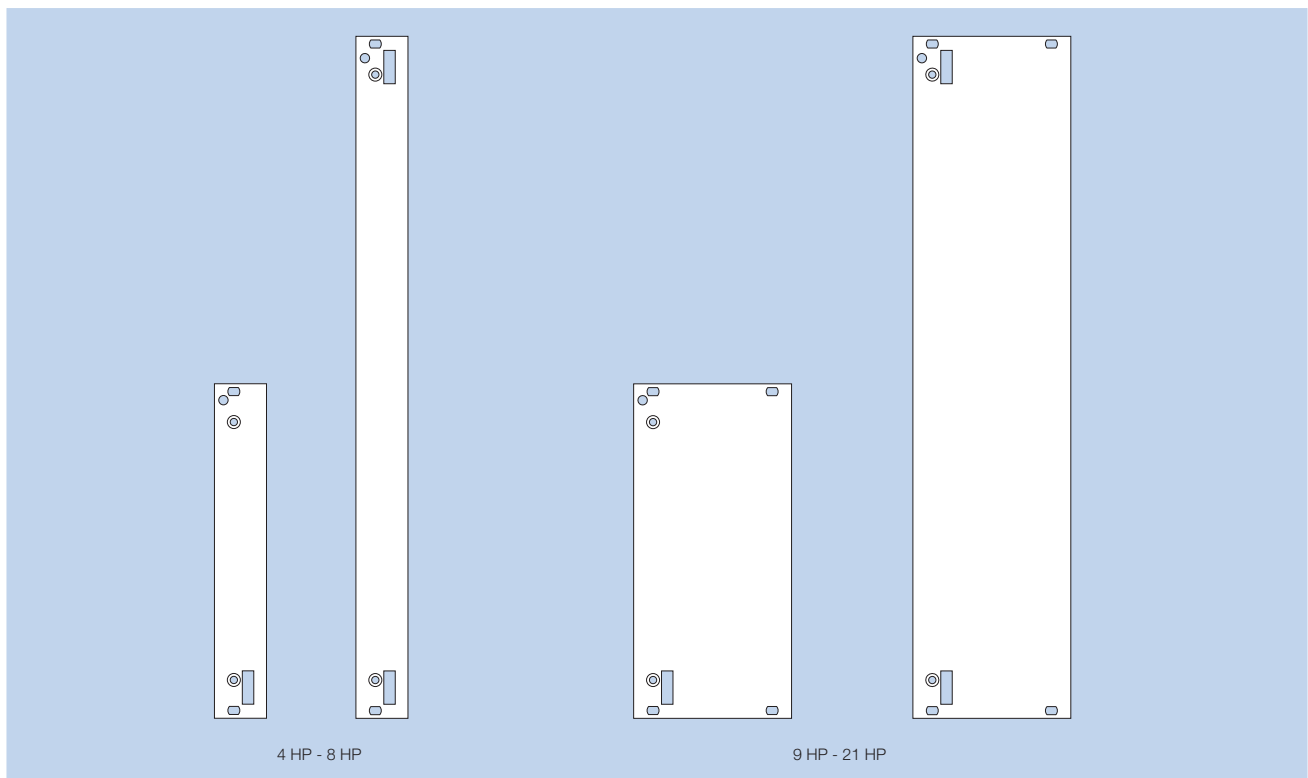
Material

Flat front panel: aluminum 2.5 mm thick

Extruded front panel: aluminum

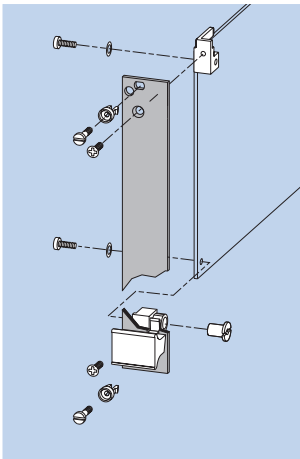
Delivery

Front panels are delivered unassembled as single parts or as a kit.



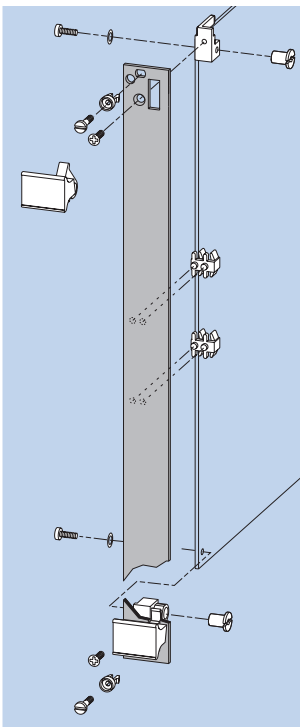
Hole pattern of the front panels

Front Panels with Ejector Handle



Ordering details kit - front panel with ejector handle (flat front panels)

	3 U	3 U	6 U	6 U
nom. width [HP]	blank order no. 409	anodized/ conductive order no. 409	blank order no. 409	anodized/ conductive order no. 409
4	168913	168919	122639	122645
5	168914	-	122640	-
6	168915	-	122641	-
8	168916	168920	122642	122646
10	168917	-	122643	-
12	168918	168921	122644	122647



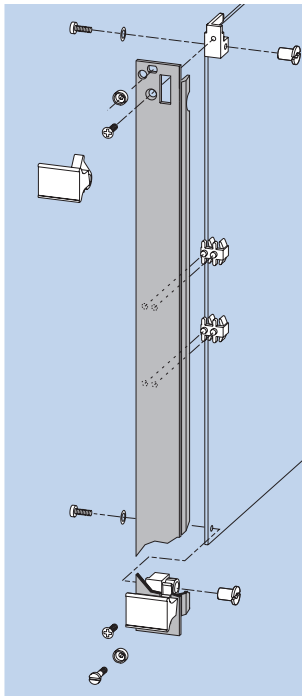
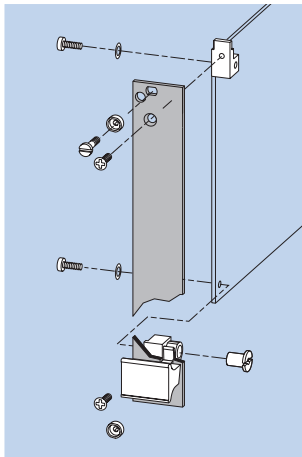
Delivery kit - front panel with ejector handle

	3 U pieces for 4-8 HP	3 U pieces for 9-12 HP	6 U pieces for 4-8 HP	6 U pieces for 9-12 HP
Front panel	1	1	1	1
Ejector handle top, gray	-	-	1	1
Ejector handle bottom, gray	1	1	1	1
Bearing bushing	1	1	2	2
Front connector metal	2	2	2	2
Front panel support plug-in	-	-	2	2
Screw retainer M 2.5	2	4	2	4
Mounting parts	1	1	1	1

Ordering details single part front panel for ejector handle (flat front panels)

	3 U blank	3 U anodized/ conductive	6 U for support plugged-in blank	6 U for support plugged-in anodized/ conductive	6 U for support screwed blank	6 U for support screwed anodized/ conductive
nom. width [HP]	order no. 409	order no. 409	order no. 409	order no. 409	order no. 409	order no. 409
4	168900	168908	102404	102344	102454	102384
5	168901	-	102405	-	-	-
6	168902	-	102406	-	-	-
8	168903	168909	102408	102348	102458	102388
10	168904	-	102410	-	-	-
12	168905	168910	102412	102352	102462	102392
16	168906	168911	102416	102356	-	-
21	168907	168912	102421	102361	-	-

Front Panels RFI with Ejector Handle



Ordering details - kit front panel RFI with ejector handle

nom. width [HP]	3 U extruded order no. 409	3 U order no. 409	6 U extruded order no. 409	6 U order no. 409
4	113655	113620	113662	-
5	113656	-	113663	-
6	113657	113622	113665	-
7	113658	-	113667	-
8	113659	-	113668	-
9	113660	-	113669	-
10	113661	-	113670	-
12	-	113626	-	113640

Finish:

Flat front panel: front side anodized, rear side conductive
Extruded front panel: passivated

Delivery kit - front panel RFI with ejector handle

	3 U pieces for 4-8 HP	3 U pieces for 9-12 HP	6 U pieces for 4-8 HP	6 U pieces for 9-12 HP
Front panel	1	1	1	1
ejector handle top, gray	-	-	1	1
ejector handle bottom, gray	1	1	1	1
Bearing bushing	1	1	2	2
Front connector metal	2	2	2	2
Front panel support plug-in	-	-	2	2
Press-fit bushing M 2.5	2	4	2	4
Mounting parts	1	1	1	1

Accessories

	order no. 409
For one flat front panel 2 RFI-springs are needed.	
RFI spring F3 - 3 U	111112
RFI spring F3 - 6 U	111116
For assemble the RFI spring F3	
Roller cutter	118433

Ordering details single part front panel RFI for ejector handle

nom. width [HP]	3 U extruded order no. 409	3 U order no. 409	6 U extruded order no. 409	6 U order no. 409
4	111847	112644	111613	-
5	113170	-	113147	-
6	111604	112650	111614	-
7	111605	-	111615	-
8	111606	-	111616	-
9	113171	-	113148	-
10	113172	-	113149	-
12	-	112668	-	112725

Ejector Handle 4 HP

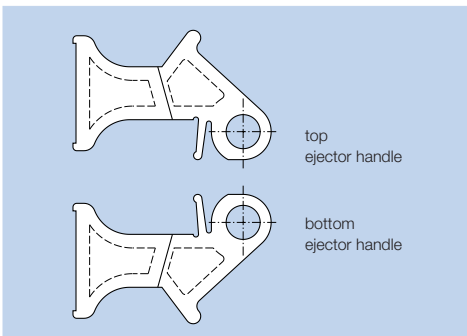


Ejector Handle

The ejector handle extends through the front panel and is screwed together with the bearing bushing at the front connector.

Technical data

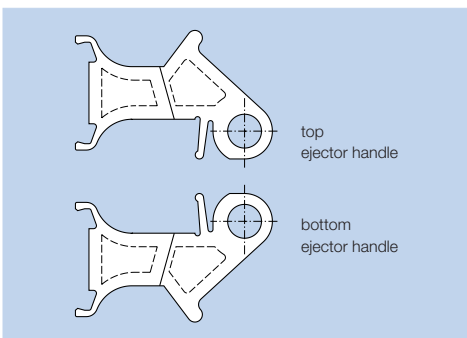
Material	Polycarbonate, 10% fiber-glass reinforced
Color	gray, black
Continuous temperature	– 40 °C to + 100 °C
Fire protection class	UL 94 V-0



Ordering details ejector handle 4 HP

version	gray order no. 409	black order no. 409
top	101923	094458
bottom	101924	094459

Mounting parts see front connectors



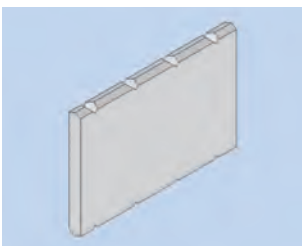
Ejector handle 4 HP

Front side open, for assembly with an ident-plate.

Ordering details ejector handle 4 HP

version	gray order no. 409	black order no. 409
top	102117	101843
bottom	102118	101844

Mounting parts see front connectors



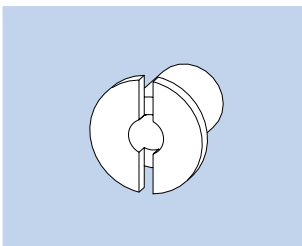
Ident-plate 4 HP

The ident-plate is markable and printable. Snapped in after mounting the handle at the front panel.

Material: aluminum

Finish: silver silk-matt anodized

order no.: **409017956**



Bearing Bushing 4

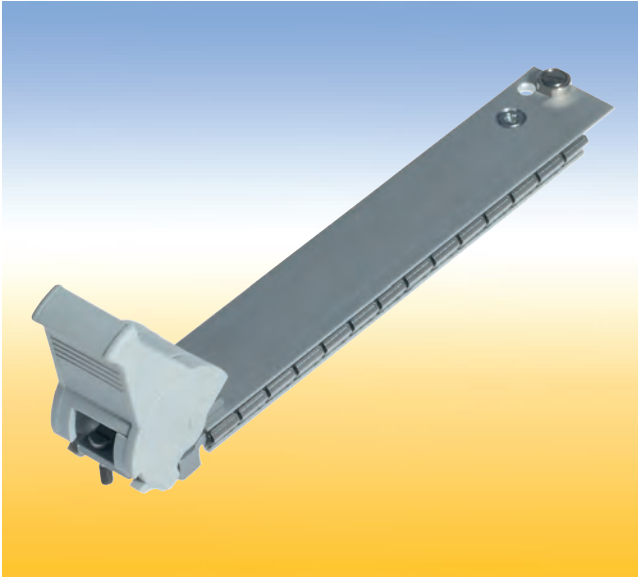
for handle 4 HP

Material: steel, galvanized

Finish: passivated

order no.: **409065888**

Front Panels RFI with IEEE Handle



Front Panels with IEEE Handle

For easy pull of PCB's with high density connectors in accordance to specification IEEE 1101.10. The assembled handle kit is stuck in the milled space of the front panel and is secured with a clamped spring. Afterwards the PCB are screwed on the integrated front connector.

Two versions with IEEE handle are available:

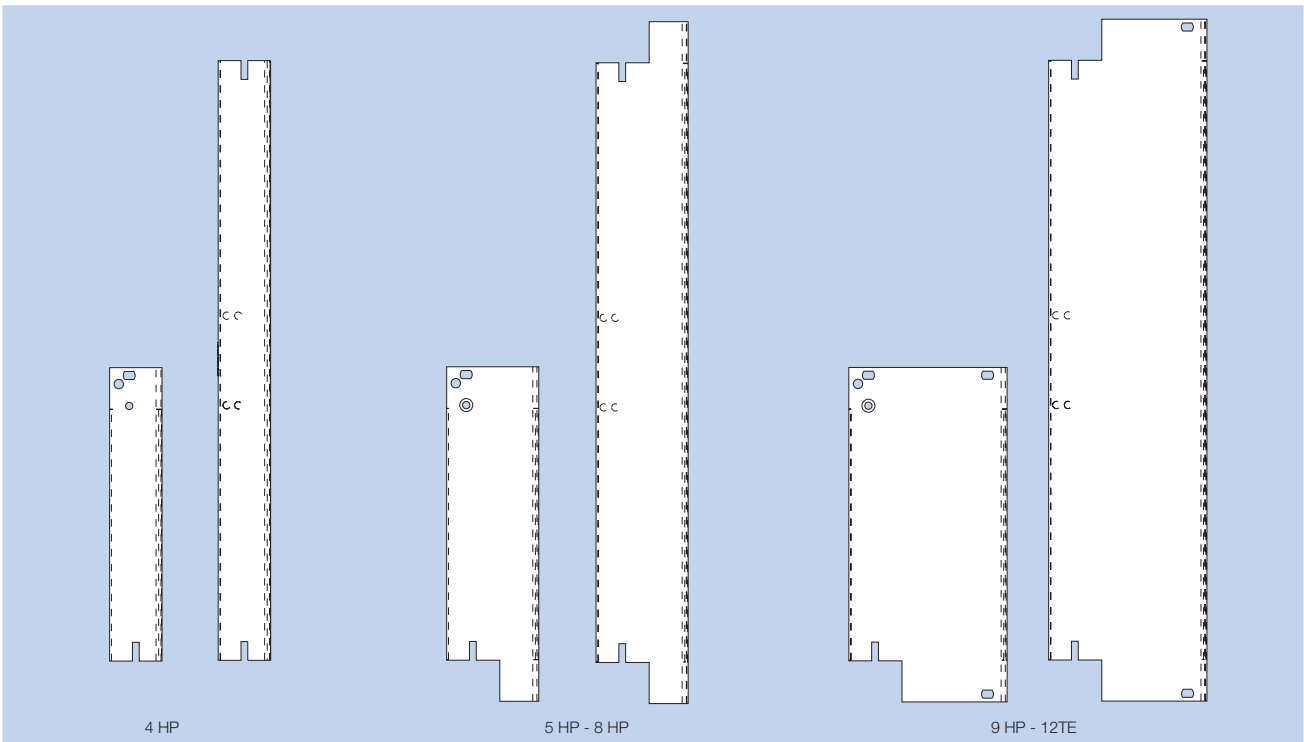
1. Flat front panel RFI
Front anodized, rear conductive. With slits in the side edges for insertion of RFI springs.
2. Extruded front panel RFI
Made of extruded aluminum alloy, with slits in the side edges for insertion of RFI springs or for contacting. Surface finish is passivated.

Delivery

Front panels are delivered with the assembled IEEE handle as single parts or as a kit.

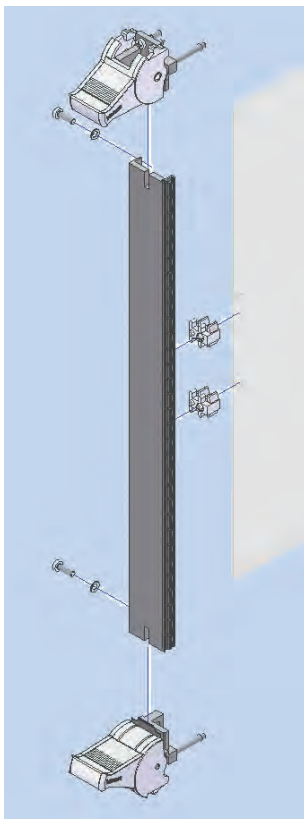
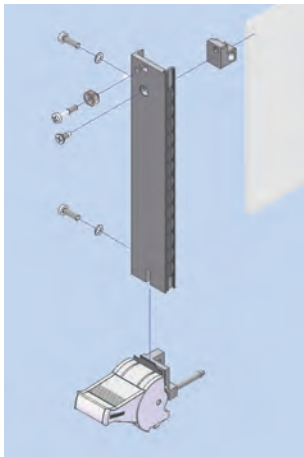
Technical data

Material	Front panel: aluminum Handle: Polycarbonate
Finish	Front panel: <i>flat</i> : front side anodized, rear side conductive <i>extruded</i> : passivated
Color	handle: RAL 7035 or black
Continous temperature	- 40 °C to + 100 °C
Fire protection class	UL 94 V-0



Hole pattern of the front panels

Front Panels RFI with IEEE Handle gray without hot-swap



Ordering details kit - front panel RFI with IEEE-handle, gray, without hot-swap

	3 U extruded order no. 409	3 U order no. 409	6 U extruded order no. 409	6 U order no. 409
nom. width [HP]				
4	113671	113641	113674	-
6	113672	-	113675	-
8	113673	-	113676	-
10	114463	-	114475	-
12	-	113647	-	113654

Delivery kit front panel RFI with IEEE-Handle without hot-swap

	3 U pieces for 4-8 HP	3 U pieces for 9-12 HP	6 U pieces for 4-8 HP	6 U pieces for 9-12 HP
Front panel	1	1	1	1
IEEE-handle top gray	-	-	1	1
IEEE-handle bottom gray	1	1	1	1
Front connector metal	1	1	-	-
Front panel support plug-in	-	-	2	2
Press-fit bushing M 2.5	1	3	-	2
Mounting parts	1	1	1	1

Accessories

	order no. 409
<i>For one flat front panel 2 RFI-springs are needed.</i>	
RFI spring F3 - 3 U	111112
RFI spring F3 - 6 U	111116
<i>For assemble the RFI spring F3</i>	
Roller cutter	118433

Ordering details single part front panel RFI for IEEE handle

	3 U extruded order no. 409	3 U order no. 409	6 U extruded order no. 409	6 U order no. 409
nom. width [HP]				
4	112152	113079	112154	-
5	112408	-	112400	-
6	112409	112778	112401	-
7	112410	-	112402	-
8	112411	-	112403	-
9	112412	-	112404	-
10	112413	-	112405	-
12	-	112790	-	112773

IEEE Handle 4 HP without hot-swap

Color: gray, RAL 7035

Delivery:

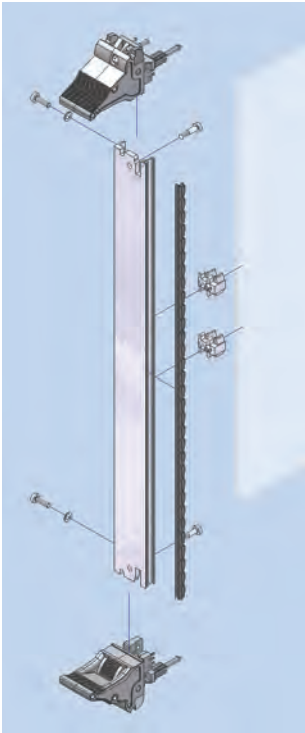
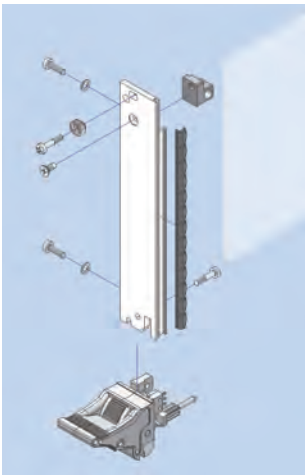
Assembled handle with mounting parts.

Ordering details

	order no. 409
IEEE handle 4HP bottom	114413
IEEE handle 4HP top	114415

Front Panels RFI with IEEE Handle black with hot-swap

Subrack Accessories



Ordering details kit - extruded front panel RFI with IEEE handle, black, hot-swap in the bottom handle

nom. width [HP]	3 U order no. 409	6 U order no. 409
4	122607	122610
6	122608	122611
8	122609	122612

Delivery kit

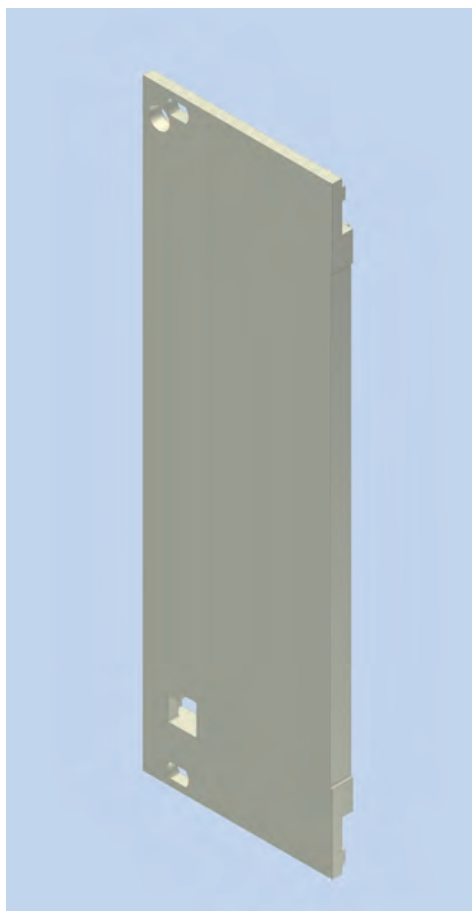
	3 U pieces for 4-8 HP	6 U pieces for 4-8 HP
Front panel	1	1
IEEE handle topblack	-	1
IEEE handle bottom black	1	1
Micro switch	1	1
Front connector metal	1	-
Front panel support plug-in	-	2
Press-fit bushing M 2.5	1	-
Mounting parts	1	1

Accessories

	order no. 409
RFI spring F3 - 3U	111112
RFI spring F3 - 6U	111116
For assemble the RFI spring F3	
Roller cutter	118433

For one flat front panel 2 RFI-springs are needed.

Plastic Front Panel, Snap-in Handle



Plastic Front Panels

On the rear side of the 2 mm thick front panel is an integrated front connector for attaching 1.6 mm thickness 3 U PCBs. The handle snaps in into the front panel, therefore the front panel can be modified easily.

Delivery

As single part

Technical data

Material	Polycarbonate, 10% fiber-glass reinforced
Color	RAL 7032, pearl gray or black
Continuous temperature	- 40 °C to + 115 °C
Fire protection class	UL 94 V-0

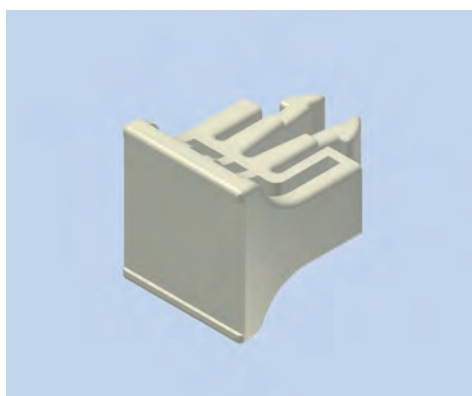
Ordering details plastic front panel

nom. width [HP]	3 U pearl gray order no. 409	3 U black order no. 409
3	035004	-
4	-	-
8	035665	040387

Accessories

Minimum order quantity 100 pieces

	order no. 409
Screw retainer 2 - M 2.5, gray	085689
Cross-head screw M 2.5 x 10. 8	056135



Snap-in Handle

For use with 2 mm thick front panels of plastic. The handle snaps in into the front panel.

Front panels aluminum on request

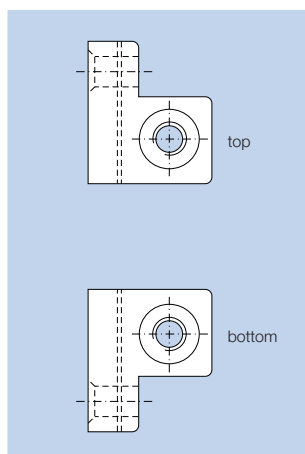
Technical data

Material	Polycarbonate, 10% fiber-glass reinforced
Color	RAL 7032, pearl gray or black
Continuous temperature	- 40 °C to + 105 °C
Fire protection class	UL 94 V-0

Ordering details snap-in handle

nom. width [HP]	RAL 7032 order no. 409	pearl gray order no. 409	black order no. 409
3	043035	035528	040385
4	043036	035529	040386

Front Connector



Front Connector

Material: zinc die-cast
Finish: untreated

Ordering details

Front connector top
Front connector bottom

order no.
409

099731

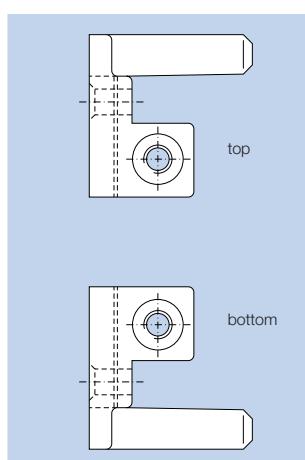
099730

Accessories

Counter sunk screw M 2.5 x 6
self tapping

Minimum order quantity 100 pieces

order no.: **409067624**



Front Connector with Male Contact

For pre-mating front panel grounding.

Material: zinc die-cast
Finish: tin-plated

Ordering details

Front connector top
Front connector bottom

order no.
409

107728

107727

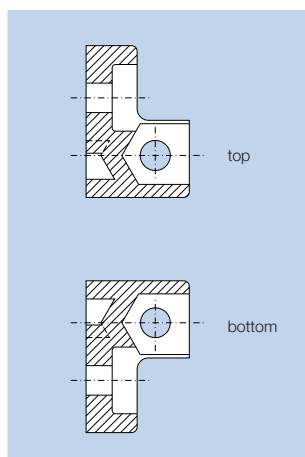
Accessories

Front panel grounding contact
Minimum order quantity 100 pieces
Self tapping counter sunk
screw M 2.5 x 6

order no.
409

058102

067624



Plastic Front Connector

Technical data

Material	Polycarbonate, 10% fiber-glass reinforced
Color	gray
Continuous temperature	- 40 °C to + 100 °C
Fire protection class	UL 94 V-0

Ordering details

Front connector top
Front connector bottom

order no.
409

065883

065882

Accessories

Minimum order quantity 100 pieces

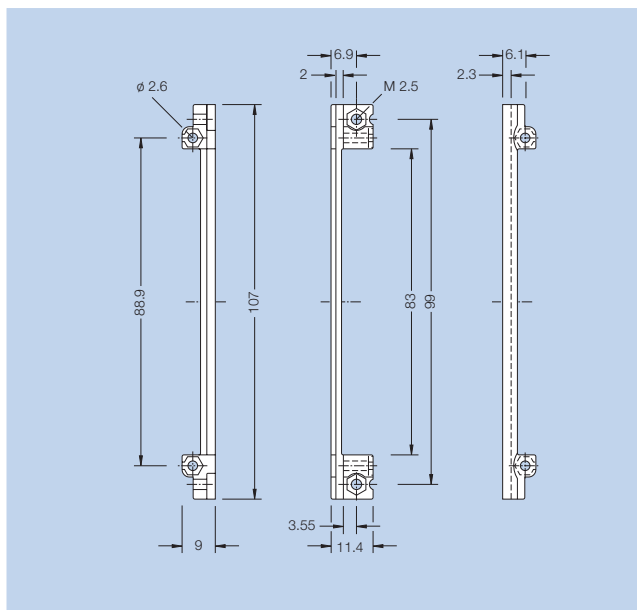
Hexagonal nut M 2.5
Counter sunk screw M 2.5 x 6

order no.
409

013938

067624

Front Connector FEE, Front Panel Support



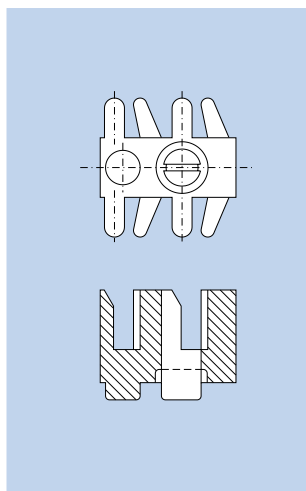
Front Connector FEE

With inserted nut M 2.5 for fastening to the front panel.
Also for use with front mounted Elements (FEE).

Technical data

Material	Polycarbonate, 10% fiber-glass reinforced nut: steel, galvanized and passivated
Color	gray
Continuous temperature	– 40 °C to + 115 °C
Fire protection class	UL 94 V-0

order no.: 409024830



Front Panel Support

For PCB's with a height over 3 U used with two-piece front connector.
Prevents deflection of the front panel when inserting the PCB.

Technical data

Material	Polycarbonate, 10% fiber-glass reinforced
Color	gray
Continuous temperature	– 40 °C to + 100 °C
Fire protection class	UL 94 V-0

order no.: 409092786

Screw Retainer, Press-fit Bushing, Quick Lock E



Screw retainer, press-fit bushing and Screw

Subrack Accessories

Screw Retainer 2.5 - M 2.5

For 2.5 mm thick front panels, for plugging in the screw

Technical data

Material	POM
Color	gray or black
Continuous temperature	- 40 °C to + 100 °C

Ordering details

Minimum order quantity 100 pieces

	Color	order no. 409
Screw retainer 2.5 - M 2.5	gray	100539
Screw retainer 2.5 - M 2.5	black	100538

Press-fit bushing M 2.5

Pressed into the front panel. Secures the screw M 2.5 and provides electrical bounding between the screw and front panel and subrack; even when the front panel is anodized.

Material: brass (without lead), nickel plated

Minimum order quantity 10 pieces

order no.: **409140266**

Screw M 2.5 x 11.3

for 2.5 mm thick front panels

Material: knurled head screw: steel, nickel plated
others: stainless steel

Ordering details

Minimum order quantity 100 pieces

	head form	order no. 409
Cylinder head screw	slotted	100540
Pan head screw M 2.5 x 11.3	cross slot	101917
Knurled head screw	knurled	101918



Quick Lock E

for 2.5 mm thick front panels.
Slot head.

Minimum order quantity 10 pieces

order no.: **409097957**

Technical data

Material	sleeve: POM bolt: steel, galvanized
Color	gray
Continuous temperature	- 40 °C to + 100 °C